



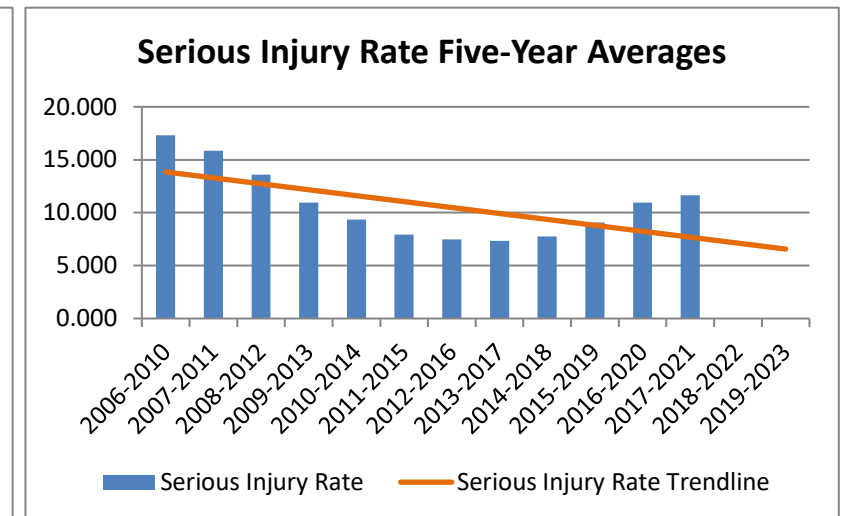
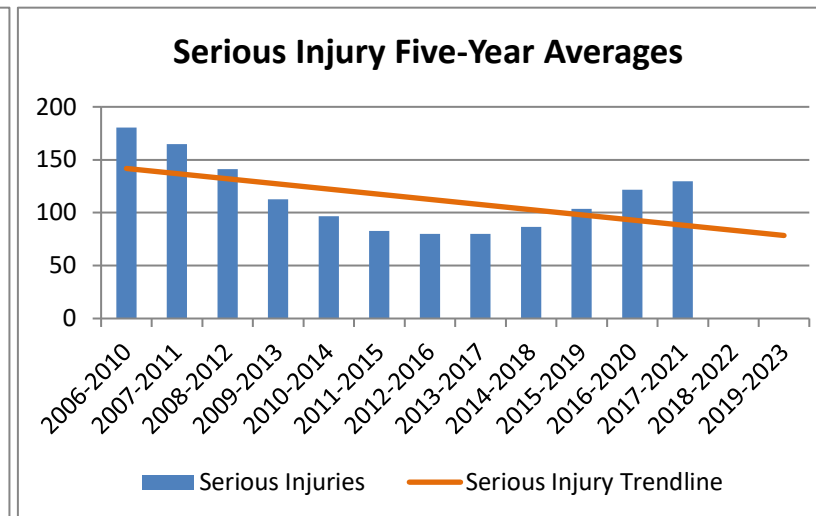
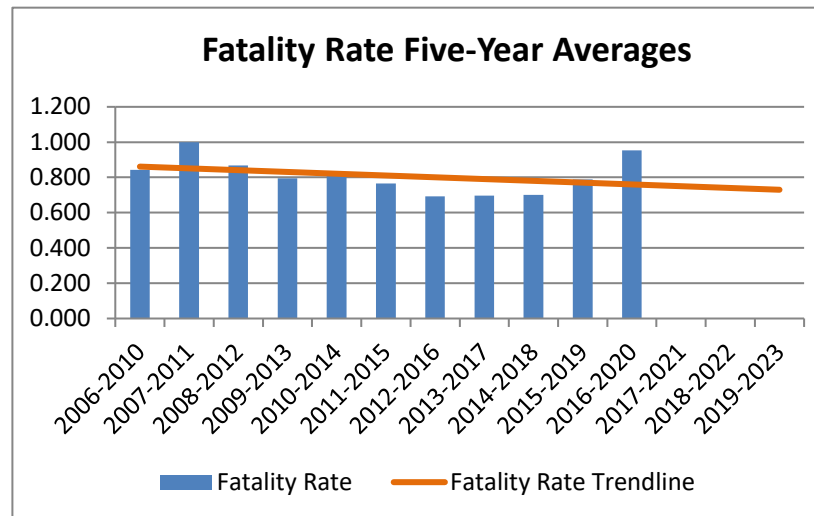
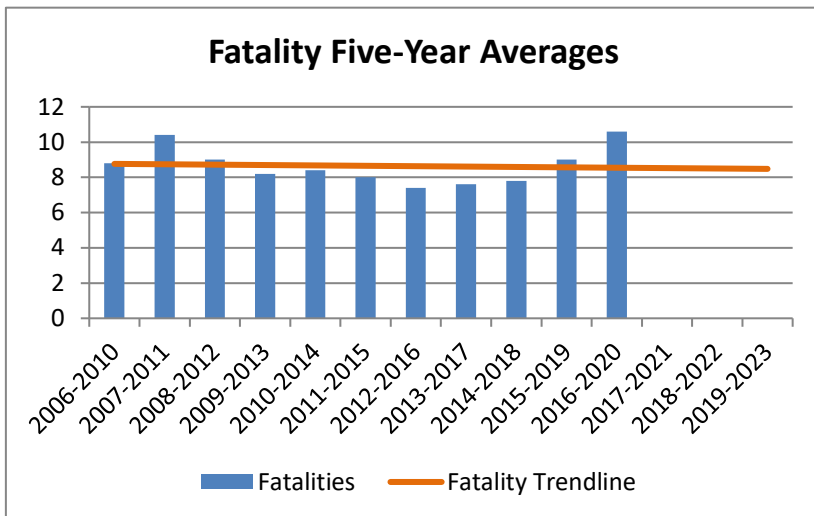
Directions:

View data in tables and graphs. Set goal percent changes and resulting targets in **yellow cells**.

[Click here for more information.](#)

Historical Crash Data	Crash Year	FARS Non-Motorist Fatal People												
		FARS Fatal People	A People	B People	C People	Persons Injured	K Crash	A Crash	B Crash	C Crash	PDO Crash	Injury Crashes	VMT (100 Million)	
<p>Notes:</p> <p>The Fatality Analysis Reporting System (FARS), created by the National Highway Traffic Safety Administration (NHTSA), is used to report fatalities. FARS data is available through 2020.</p> <p>The Department of Motor Vehicles (DMV) crash data is used to report injury (Types A, B, and C) and property damage only (PDO) crashes. DMV data is available through 2021.</p> <p>All fatality and injury totals are based on the most recent MPO boundary.</p>	2006	4	0	175	127	489	791	6	123	93	332	1,356	548	10.4
	2007	13	1	212	124	427	763	12	147	92	294	1,220	533	10.5
	2008	10	1	235	207	706	1,148	9	184	156	475	1,704	815	10.6
	2009	7	2	138	217	627	982	5	116	171	409	1,311	696	10.3
	2010	10	2	143	209	598	950	11	121	168	397	1,418	686	10.4
	2011	12	1	96	222	612	930	9	78	184	385	1,512	647	10.2
	2012	6	1	93	505	350	948	7	80	369	227	1,607	676	10.4
	2013	6	2	94	650	242	986	7	72	477	124	1,623	673	10.2
	2014	8	1	57	673	211	941	6	51	481	55	1,571	587	10.3
	2015	8	0	74	713	189	976	9	56	513	40	1,570	609	11.0
	2016	9	2	81	664	155	900	8	68	495	40	1,626	603	11.4
	2017	7	0	93	630	181	904	5	80	482	46	1,542	608	11.6
	2018	7	0	127	251	745	1,123	8	113	202	514	1,401	829	11.4
	2019	14	2	143	259	829	1,231	13	128	213	543	1,455	884	11.6
2020	16	4	165	186	818	1,169	13	149	154	515	946	818	9.6	
2021	--	--	121	237	993	1,351	14	111	198	585	1,069	894	11.6	

Calculated Five-Year Averages	Five-Year Period	Fatalities	% Change	Fatality Rate	% Change	Serious Injuries	% Change	Serious Injury Rate	% Change
<p>Notes:</p> <p>This table contains the five-year averages based on the historical crash data. Fatality data is available up through the 2016-2020 five-year period. Serious injury data is reported up through the 2017-2021 five-year period.</p>	2006-2010	9	--	0.843	--	181	--	17.299	--
	2007-2011	10	18.2%	1.000	18.6%	165	-8.7%	15.843	-8.4%
	2008-2012	9	-13.5%	0.867	-13.3%	141	-14.4%	13.582	-14.3%
	2009-2013	8	-8.9%	0.795	-8.3%	113	-20.0%	10.942	-19.4%
	2010-2014	8	2.4%	0.814	2.4%	97	-14.4%	9.364	-14.4%
	2011-2015	8	-4.8%	0.766	-5.9%	83	-14.3%	7.932	-15.3%
	2012-2016	7	-7.5%	0.693	-9.5%	80	-3.6%	7.477	-5.7%
	2013-2017	8	2.7%	0.697	0.5%	80	0.0%	7.319	-2.1%
	2014-2018	8	2.6%	0.700	0.4%	86	8.3%	7.754	5.9%
	2015-2019	9	15.4%	0.789	12.7%	104	19.9%	9.082	17.1%
	2016-2020	11	17.8%	0.953	20.8%	122	17.6%	10.952	20.6%
	2017-2021	--	--	--	--	130	6.6%	11.637	6.3%



Projected Five-Year Average Based on Historical Trendline	Description	2021	2022	2023	Average Percent Change*
Notes: This table projects the five-year average for future years based on the historical trendline.	Fatalities	9	9	8	-0.3%
	Fatality Rate	0.750	0.740	0.730	-1.4%
	Serious Injuries	88	83	78	-5.8%
	Serious Injury Rate	7.682	7.121	6.561	-7.9%

*A positive value represents an increase and a negative value represents a reduction in five-year averages from 2021 to 2023

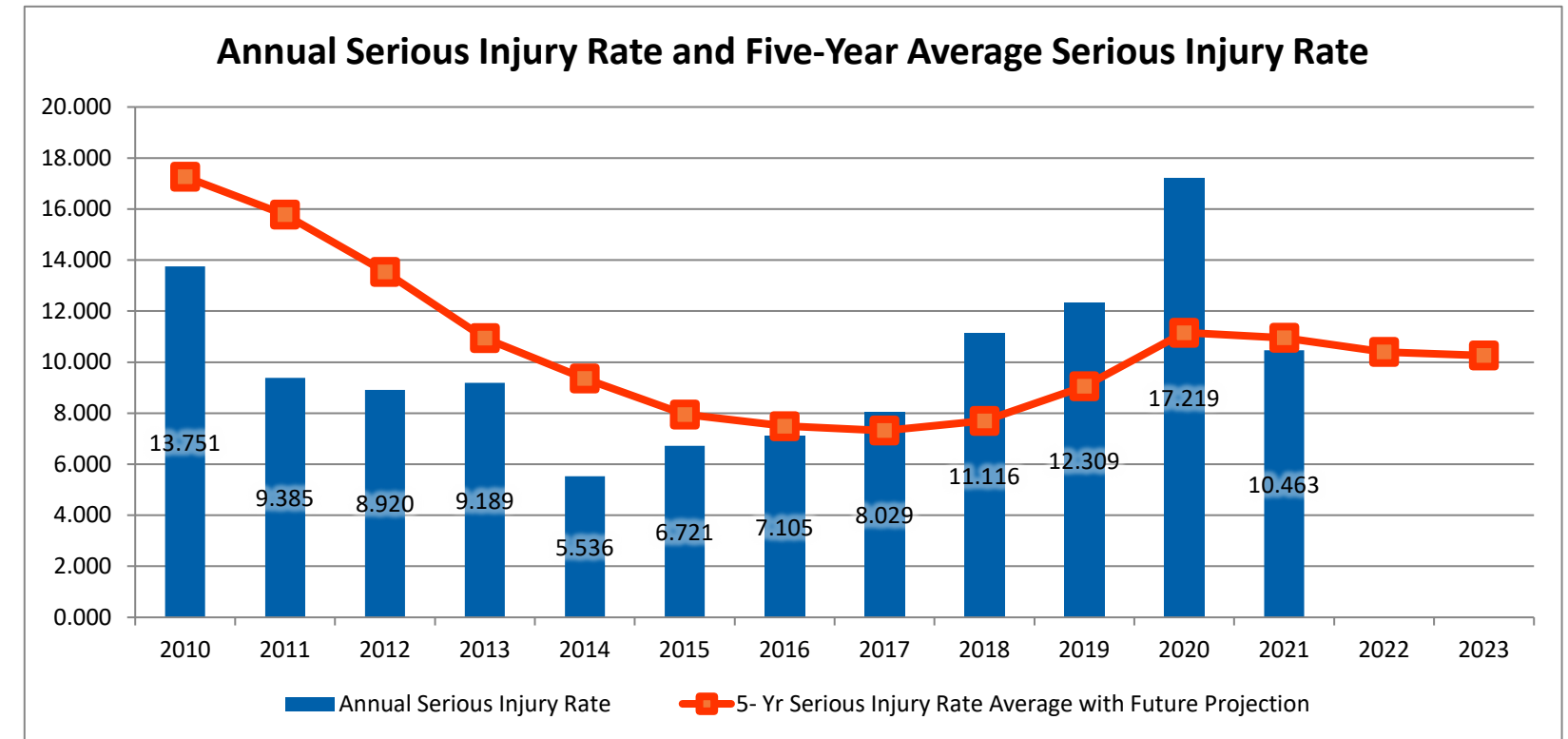
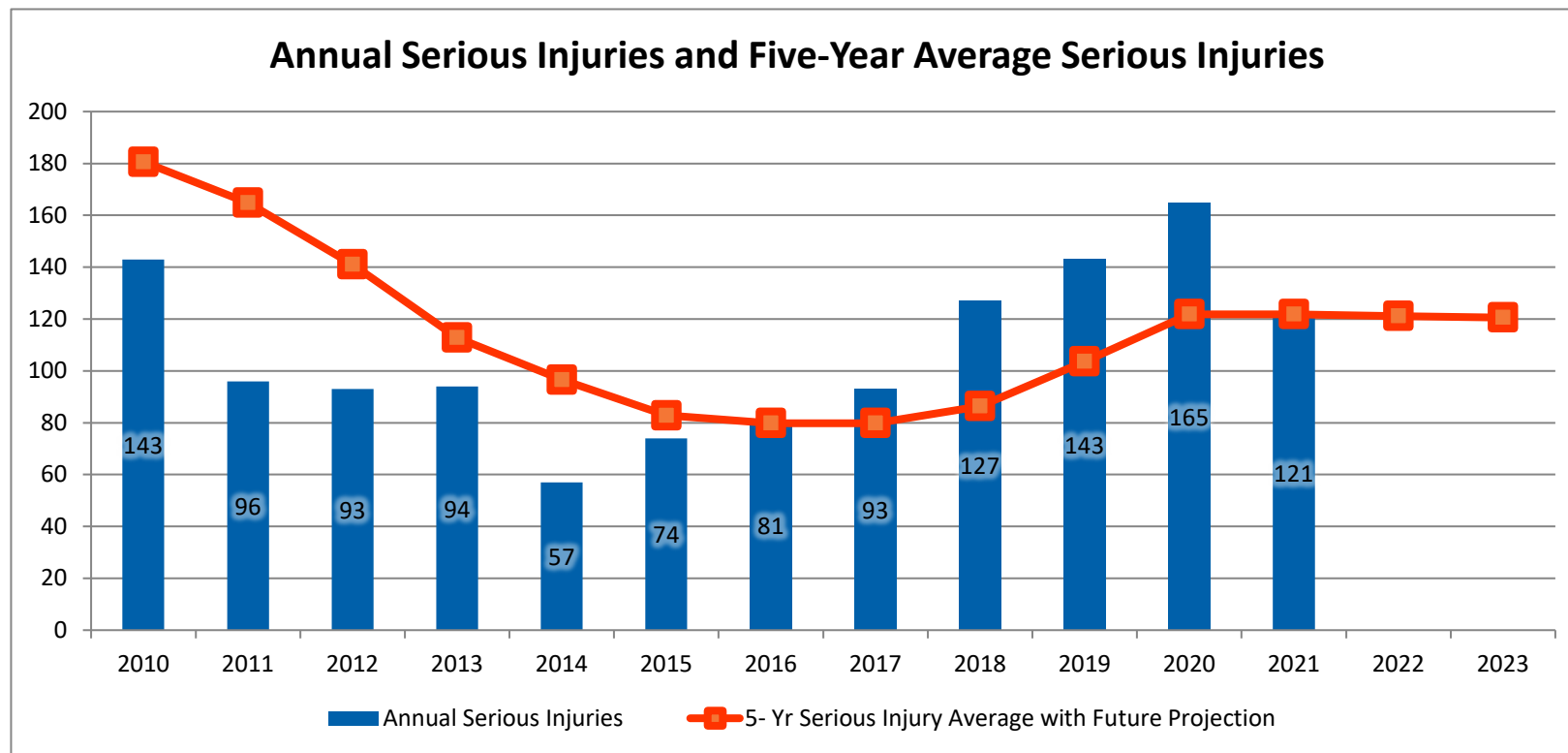
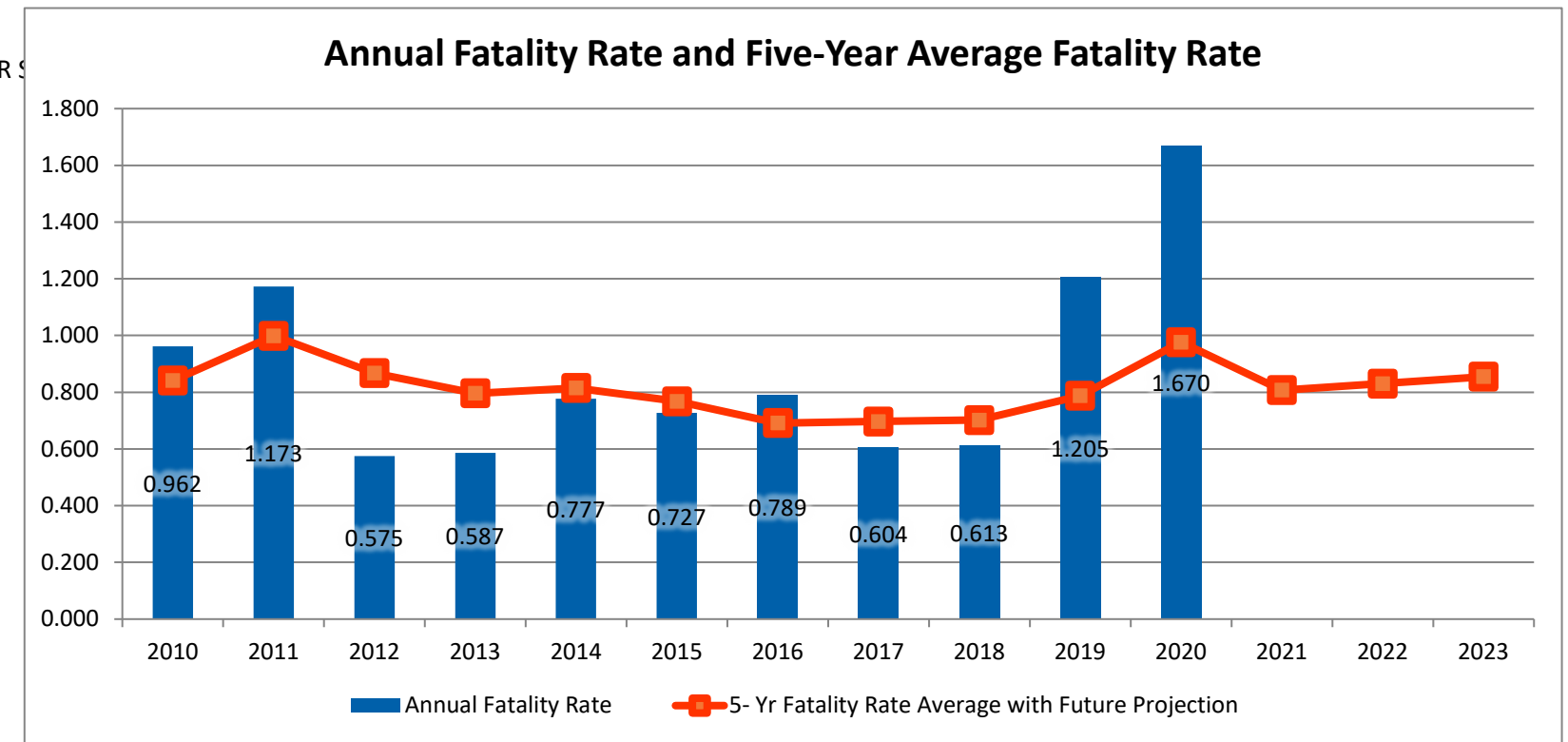
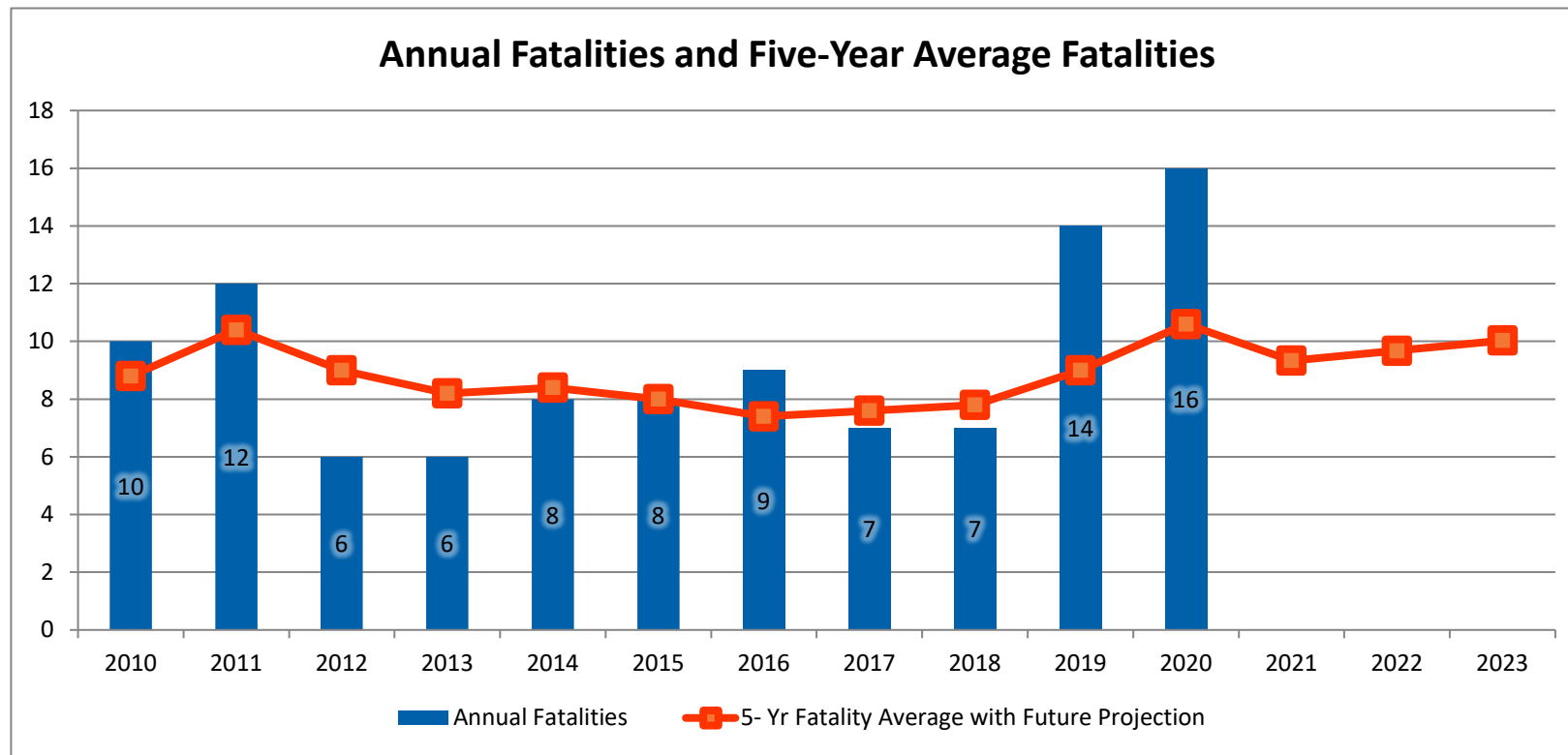
Goal Percent Changes	Description	Statewide Goal Percent Change	MPO Goal Percent Change
Instructions: Enter a goal percent change in the yellow cells. The goals will be used to develop the 2023 MPO safety targets in coordination with historical data in the table below. The statewide goal percent changes are provided for reference. The MPO may adopt the statewide goal percent changes if desired.	Fatalities	3.69%	3.69%
	Serious Injuries	-0.52%	-0.52%
	VMT	0.77%	0.77%

*A positive value represents an increase and a negative value represents a reduction in five-year averages from 2021 to 2023

Projected Five-Year Average Based on Goal Percent Changes and Projected VMT Change	Description	2021	2022	2023
Instructions: This table projects the five-year average for future years based on the most recent five-year averages and the goal percent changes. Graphs for this data are shown in the <i>Graphs_Fatal_SI</i> tab.	VMT (100 Million)*	11.56	11.65	11.74
	Fatalities	9	10	10
	Fatality Rate	0.807	0.830	0.854
	Serious Injuries*	122	121	121
	Serious Injury Rate*	10.952	10.398	10.265

*Historical data provided for 2021. Projections reported for 2022-2023

2023 MPO Targets	Description	2023
Instructions: Once goal percent changes have been agreed upon, enter the resulting 2023 five-year average target values (from the table above).	Fatalities	10
	Fatality Rate	0.854
	Serious Injuries	121
	Serious Injury Rate	10.265





Directions:

View data in tables and graphs. Set goal percent changes and resulting targets in **yellow cells**.

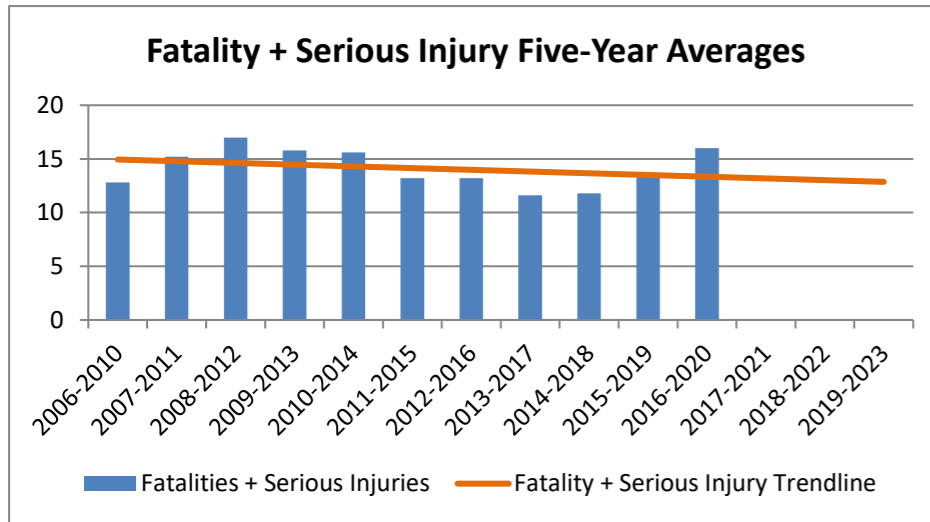
[Click here for more information.](#)

Historical Crash Data															
Crash Year	FARS Fatal People	FARS Non-Motorist Fatal People	Non-Motorist A People	Non-Motorist B People	Non-Motorist C People	Non-Motorist Persons Injured	Non-Motorist K Crash	Non-Motorist A Crash	Non-Motorist B Crash	Non-Motorist C Crash	Non-Motorist PDO Crash	Non-Motorist Injury Crashes	VMT (100 Million)	K+A Non-Motorist People	
2006	4	0	3	6	1	10	1	3	5	1	0	9	10.4	3	
2007	13	1	9	6	1	16	1	9	5	1	1	15	10.5	10	
2008	10	1	20	19	18	57	1	19	19	15	0	53	10.6	21	
2009	7	2	10	15	19	44	2	11	15	14	0	40	10.3	12	
2010	10	2	16	32	24	72	2	16	31	24	0	71	10.4	18	
2011	12	1	14	38	21	73	1	14	38	20	0	72	10.2	15	
2012	6	1	18	41	21	80	1	19	40	16	1	75	10.4	19	
2013	6	2	13	48	9	70	2	12	48	8	0	68	10.2	15	
2014	8	1	10	54	4	68	1	10	50	4	1	64	10.3	11	
2015	8	0	6	49	2	57	1	6	49	2	2	57	11.0	6	
2016	9	2	13	34	4	51	2	11	30	4	1	45	11.4	15	
2017	7	0	11	47	4	62	0	11	45	3	2	59	11.6	11	
2018	7	0	16	17	24	57	0	16	17	24	0	57	11.4	16	
2019	14	2	17	25	11	53	2	17	25	11	0	53	11.6	19	
2020	16	4	15	16	11	42	4	15	16	11	0	42	9.6	19	
2021	--	--	12	12	12	36	4	12	12	10	0	34	11.6	--	

Notes:
 The Fatality Analysis Reporting System (FARS), created by the National Highway Traffic Safety Administration (NHTSA), is used to report fatalities. FARS data is available through 2020.
 The Department of Motor Vehicles (DMV) crash data is used to report injury (Types A, B, and C) and property damage only (PDO) crashes. DMV data is available through 2021.
 All fatality and injury totals are based on the most recent MPO boundary.

Calculated Five-Year Averages							
Five-Year Period	Fatalities	% Change	Serious Injuries	% Change	Fatalities + Serious Injuries	% Change	
2006-2010	1	--	12	--	13	--	
2007-2011	1	16.7%	14	19.0%	15	18.8%	
2008-2012	1	0.0%	16	13.0%	17	11.8%	
2009-2013	2	14.3%	14	-9.0%	16	-7.1%	
2010-2014	1	-12.5%	14	0.0%	16	-1.3%	
2011-2015	1	-28.6%	12	-14.1%	13	-15.4%	
2012-2016	1	20.0%	12	-1.6%	13	0.0%	
2013-2017	1	-16.7%	11	-11.7%	12	-12.1%	
2014-2018	1	-40.0%	11	5.7%	12	1.7%	
2015-2019	1	33.3%	13	12.5%	13	13.6%	
2016-2020	2	100.0%	14	14.3%	16	19.4%	
2017-2021	--	--	14	-1.4%	--	--	

Notes:
 This table contains the five-year averages based on the historical crash data. Fatality data is available up through the 2016-2020 five-year period. Serious injury data is reported up through the 2017-2021 five-year period.



Projected Five-Year Average Based on Historical Trendline	Description	2021	2022	2023	Average Percent Change
Notes: This table projects the five-year average for future years based on the historical trendline.	Non-Motorized Fatalities + Serious Injuries	13	13	13	-1.2%

*A positive value represents an increase and a negative value represents a reduction in five-year averages from 2021 to 2023

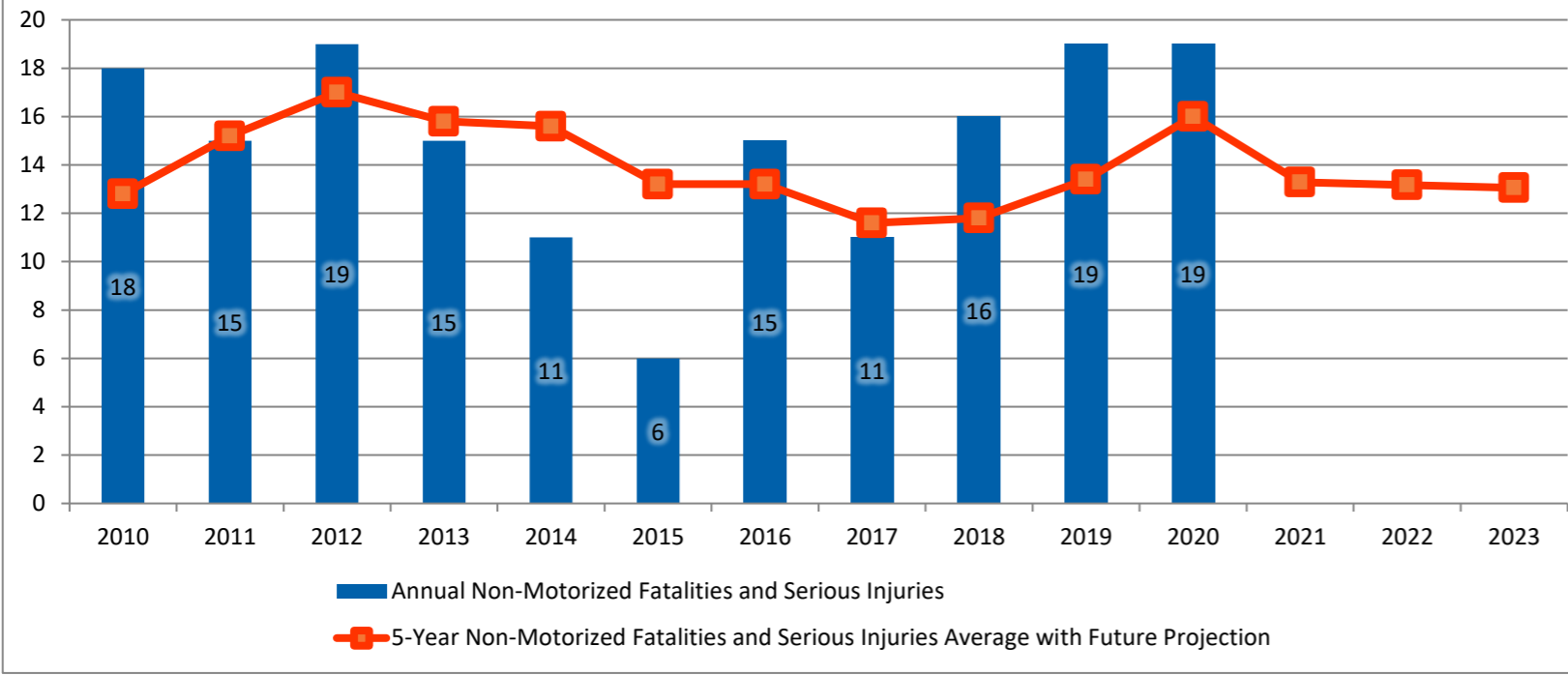
Goal Percent Change	Description	Statewide Percent Change	Goal Percent Change*
Instructions: Enter a goal percent change in the yellow cells. The goals will be used to develop the 2023 MPO safety targets in coordination with historical data in the table below. The statewide percent changes are provided for reference. The MPO may adopt the statewide goal percent changes if desired.	Non-Motorized Fatalities + Serious Injuries	-0.86%	-0.86%

*A positive value represents an increase and a negative value represents a reduction in five-year averages from 2021 to 2023

Projected Five-Year Average Based on Goal Percent Change and Projected VMT Change	Description	2021	2022	2023
Instructions: This table projects the five-year average for future years based on the most recent five-year averages and the goal percent changes. Graphs for this data are shown in the <i>Graphs_Bike_Ped</i> tab.	Non-Motorized Fatalities + Serious Injuries	13	13	13

2023 MPO Targets	Description	2023
Instructions: Once goal percent changes have been agreed upon, enter the resulting 2023 five-year average target values (from the table above).	Non-Motorized Fatalities + Serious Injuries	13

Annual Non-Motorized Fatalities and Serious Injuries



KABCO Scale: A functional measure of the injury severity for any person involved as determined by law enforcement at the scene of the crash.

Injury Type	Common Identification	Full Definition
K	Fatal Injury	A fatal injury is an injury that results in death within 30 days after the motor vehicle crash in which the injury occurred.
A	Incapacitating Injury	Injury = Suspected Serious Injury which is any injury other than fatal, resulting in one or more of the following: <ul style="list-style-type: none"> a. Severe laceration resulting in exposure of underlying tissues, muscle, organs, or resulting in significant loss of blood b. Broken or distorted extremity (arm or leg) c. Crush injuries d. Suspected skull, chest, or abdominal injury other than bruises or minor lacerations e. Significant burns (second and third degree burns over 10 percent or more of the body) f. Unconsciousness when taken from the crash scene g. Paralysis
B	Non-incapacitating Injury	Minor/Possible Injury = Other Visible Injury, as Bruises, Abrasions, Swelling, Limping, etc.
C	Possible Injury	No Apparent Injury = No Visible Injury, But Complaint of Pain, or Momentary Unconsciousness
PDO Crash	Property Damage Only	Crash resulting in property damage of at least \$1500 to the motor vehicle or other property but without injury to any occupants or non-motorists. The damage amount prior to 2009 is \$1,000.