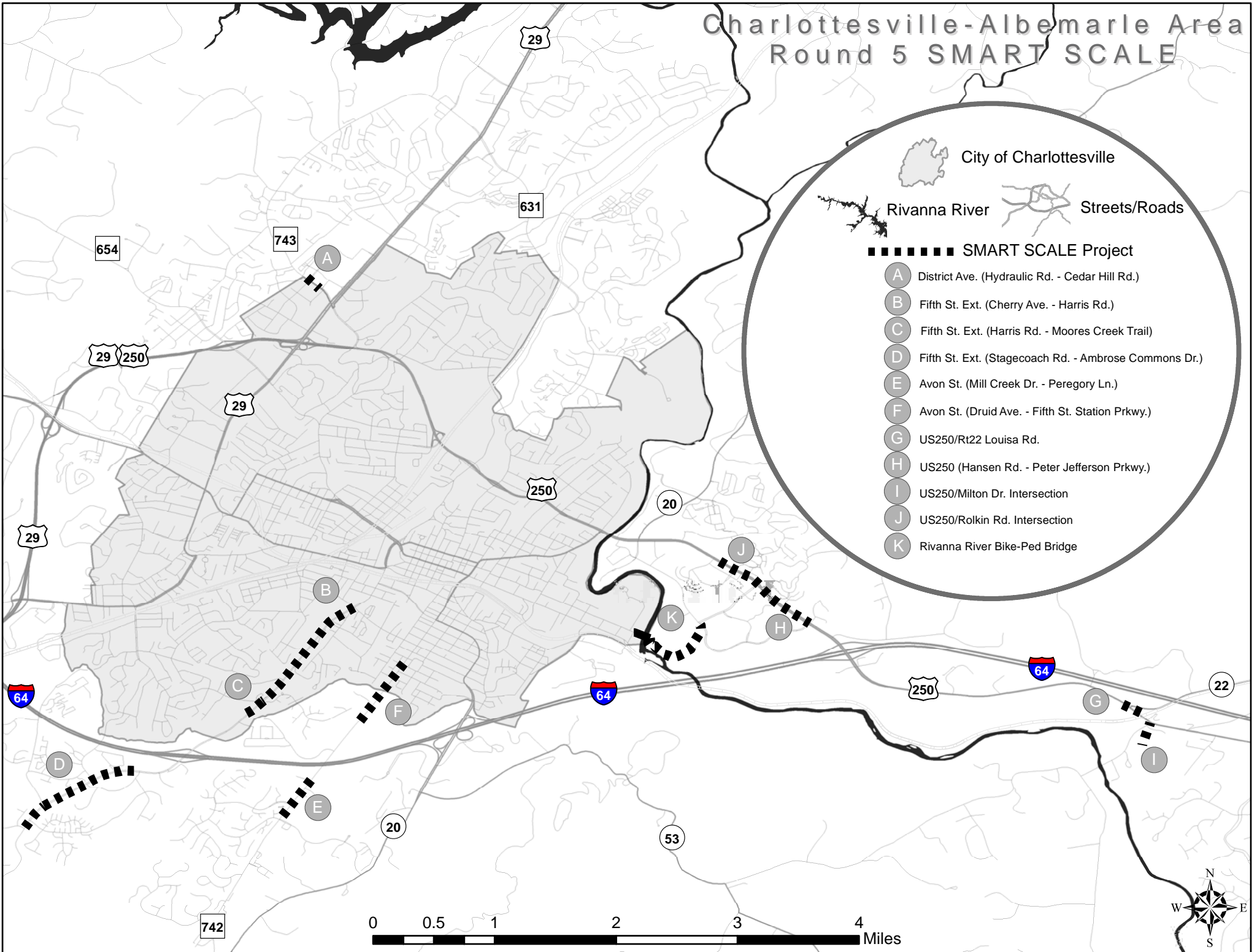
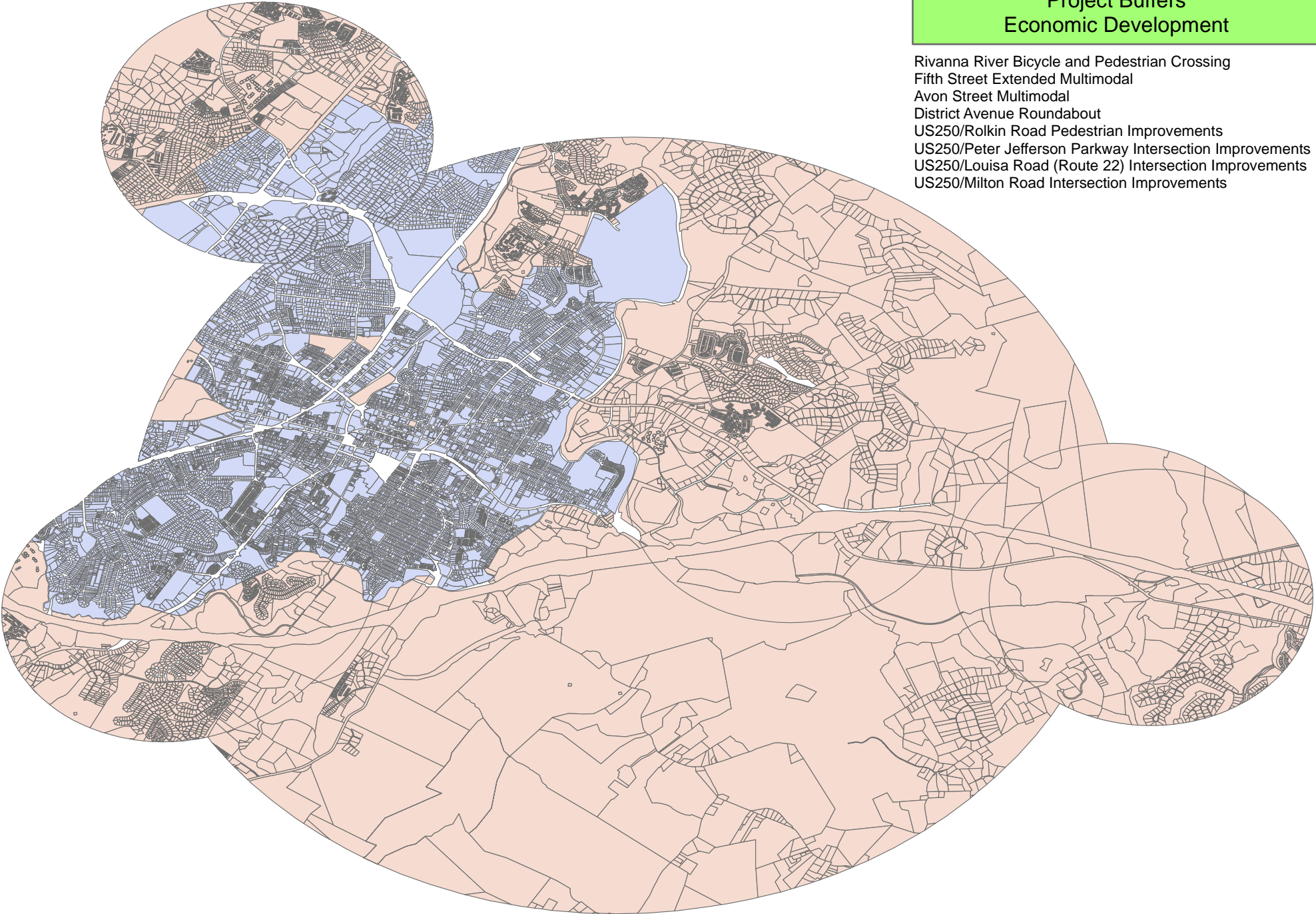


Charlottesville-Albemarle Area Round 5 SMART SCALE



**SMART SCALE Round 5
Project Buffers
Economic Development**

- Rivanna River Bicycle and Pedestrian Crossing
- Fifth Street Extended Multimodal
- Avon Street Multimodal
- District Avenue Roundabout
- US250/Rolkin Road Pedestrian Improvements
- US250/Peter Jefferson Parkway Intersection Improvements
- US250/Louisa Road (Route 22) Intersection Improvements
- US250/Milton Road Intersection Improvements



Charlottesville Residency Smart Scale Applications



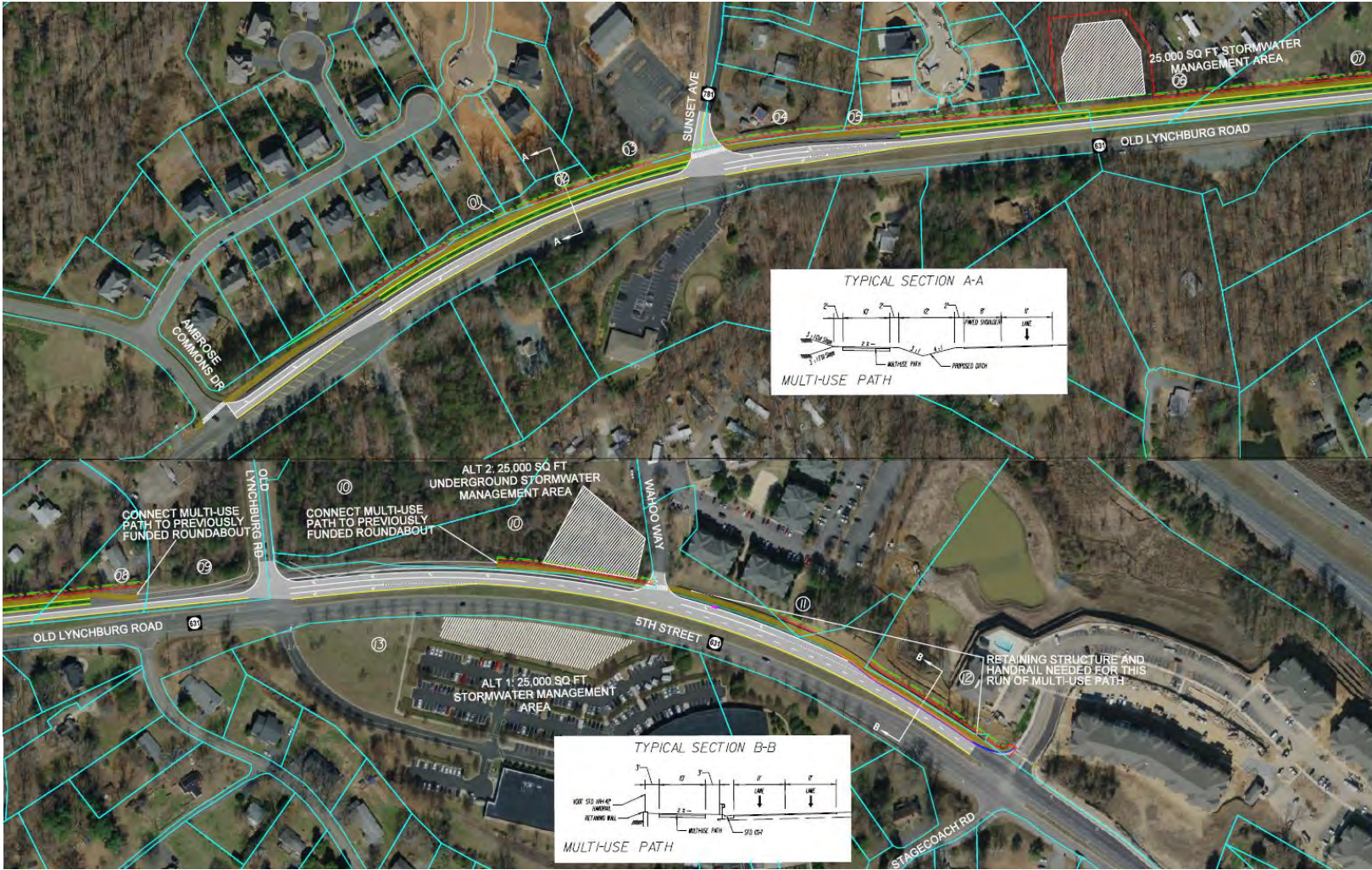
No	Project	PW ID	SP ID	Locality	Applicant	Status	L&D P.M.	Designer
CHARLOTTESVILLE RESIDENCY								
1	Rio (631)/Belvedere (1920) Green-T	0631-1920	9144	Albe/Cville	County	Estimate	T. Nguyen	Baker
2	5th Street (631) S.U. Path (Ambrose to Afton Pond)	0631-0780	9152	Albemarle	County	Review	J. Warfield	Baker
3	Avon Street (742) SUP (Mill Creek to Peregoy)	0742-1150	9143	Albemarle	County	Review	T. Nguyen	Baker
4	US-250/1815 (Old Trail Dr) Brownsville Roundabout	0250-1815	9153	Albemarle	County	Review	T. Nguyen	Baker
5	US-250/22 Shadwell Displaced Left	0250-0022	9332	Albemarle	TJPDC	Review	J. Warfield	Baker
6	US-250/729 (Milton Rd) Shadwell Roundabout	0250-0729	9334	Albemarle	TJPDC	Review	J. Warfield	Baker
7	US-250/1779 (Rolkin Rd) Ped Improvements	0250-1779	9329	Albemarle	TJPDC	Review	J. Cooner	Baker
8	US-250/1140 (Peter Jeff.) Int. Imp. + Park & Ride	0250-1140	9331	Albemarle	TJPDC	Draft	J. Warfield	Baker
9	Hydraulic (743)/District Ave Roundabout	0743-District	9180	Albe/Cville	CAMPO	Review	J. Warfield	Baker
10	Rivanna River S.U. Path & Bridge (Woolen Mills)	Rivanna-SUP	9179	Albemarle	CAMPO	Review	T. Nguyen	Baker
11	Avon Street Multimodal (Avon Ct to Druid Ave)	Avon-Palatine	9178	Cville/Albe	CAMPO	Review	T. Nguyen	Baker
12	5th Street Multimodal (5th St Landing to Harris)	5th-Harris	9174	C'ville	CAMPO	Review	J. Warfield	Baker
	5th Street Multimodal (Harris to Cherry)	5th-?	9454	C'ville	City			City
14	US-29/616/Comm. Ruckersville RCUTs	0029-0616	9480	Greene	County	Estimate	T. Nguyen	T. Nguyen
15	US-33/743 (Advance Mills Rd) Midway Int. Imp.	0033-0743	9484	Greene	County	Estimate	J. Cooner	Baker
16	Route 230/231/686 Pratts Roundabout	0230-0231	9171	Madison	County	Final	J. Rose	J. Rose

Rio (631) / Belvedere (1920) Green-T – Albemarle/C'ville



Status: Estimating

5th Street S.U. Path (Ambrose Com. Dr. to Afton Pond Ct.) – Albemarle



Status: 2nd Design Revision

Avon Street S.U. Path (Mill Creek to Peregoy) – Albemarle



Status: 2nd Review

US-250 / 1815 Old Trail Dr. Roundabout – Albemarle



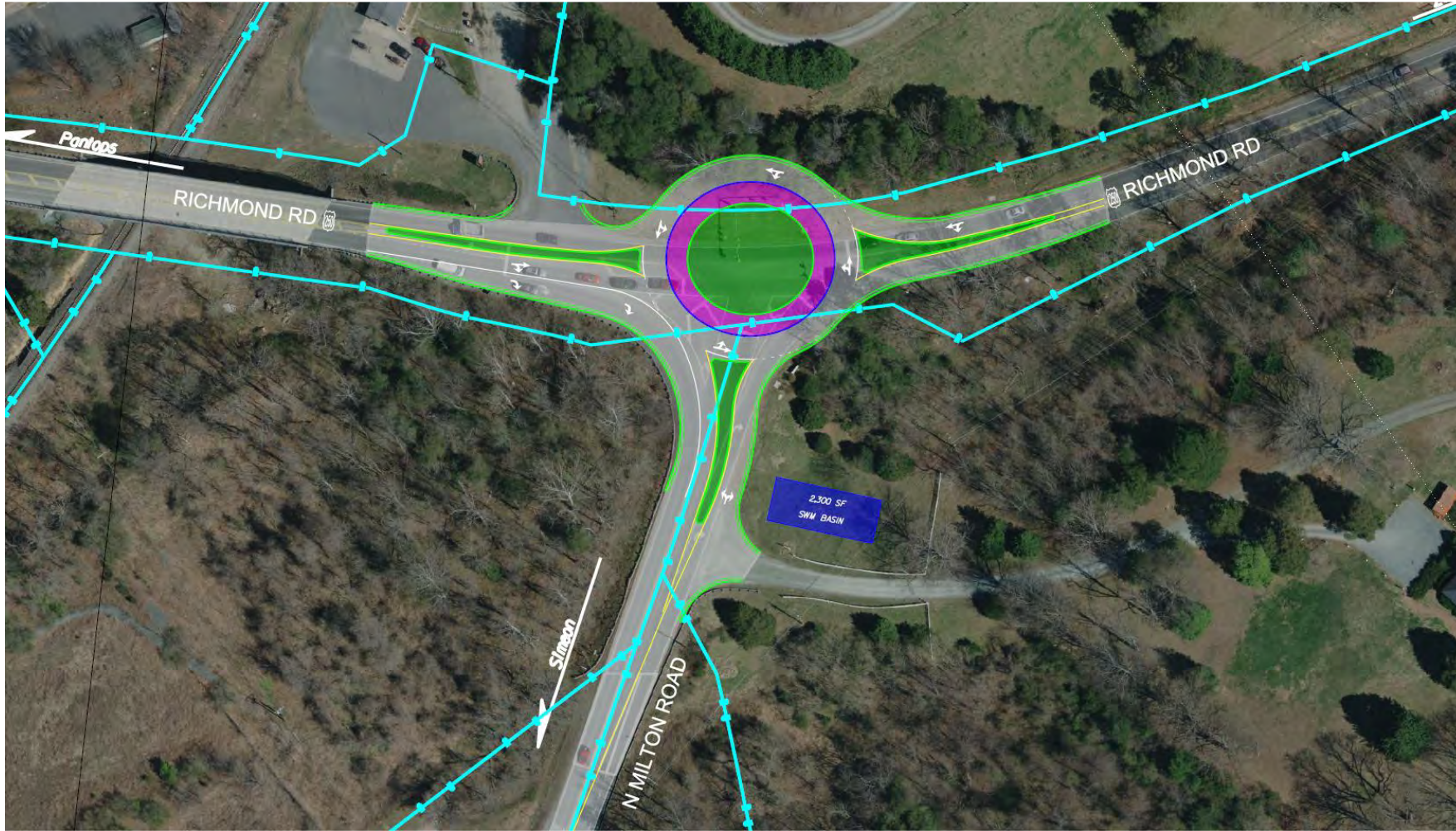
Status: Design Revision

US-250 / 22 Shadwell Displaced Left Turn – Albemarle



Status: 2nd Review

US-250 / 729 (Milton Rd) Shadwell Roundabout – Albemarle



Status: Design Revision

US-250 / Rolkin Rd Pedestrian Improvements – Albemarle



Status: 2nd Review

US-250 / Peter Jeff. Thru-Cut and Park & Ride – Albemarle



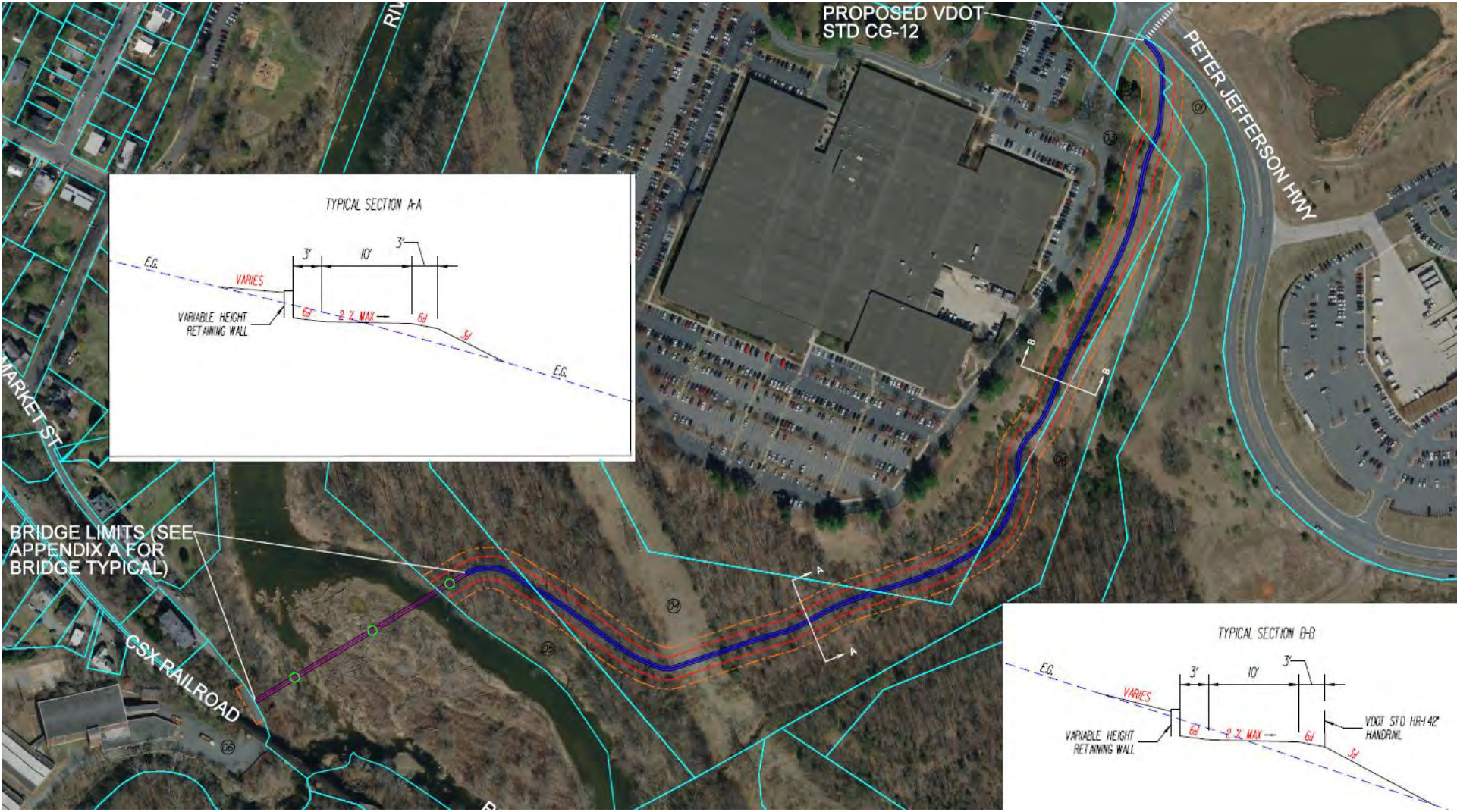
Status: Draft Design

Hydraulic Rd (743) / District Ave Roundabout – Albe./C'ville



Status: Design Revision

Rivanna River Bike and Pedestrian Crossing – Albemarle



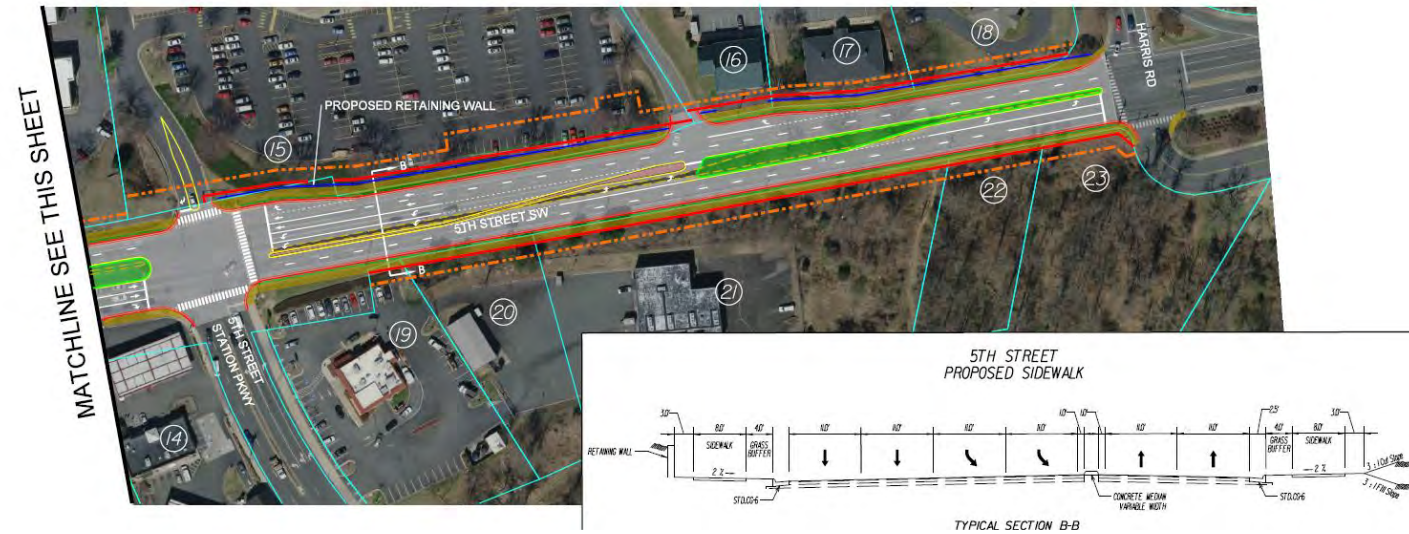
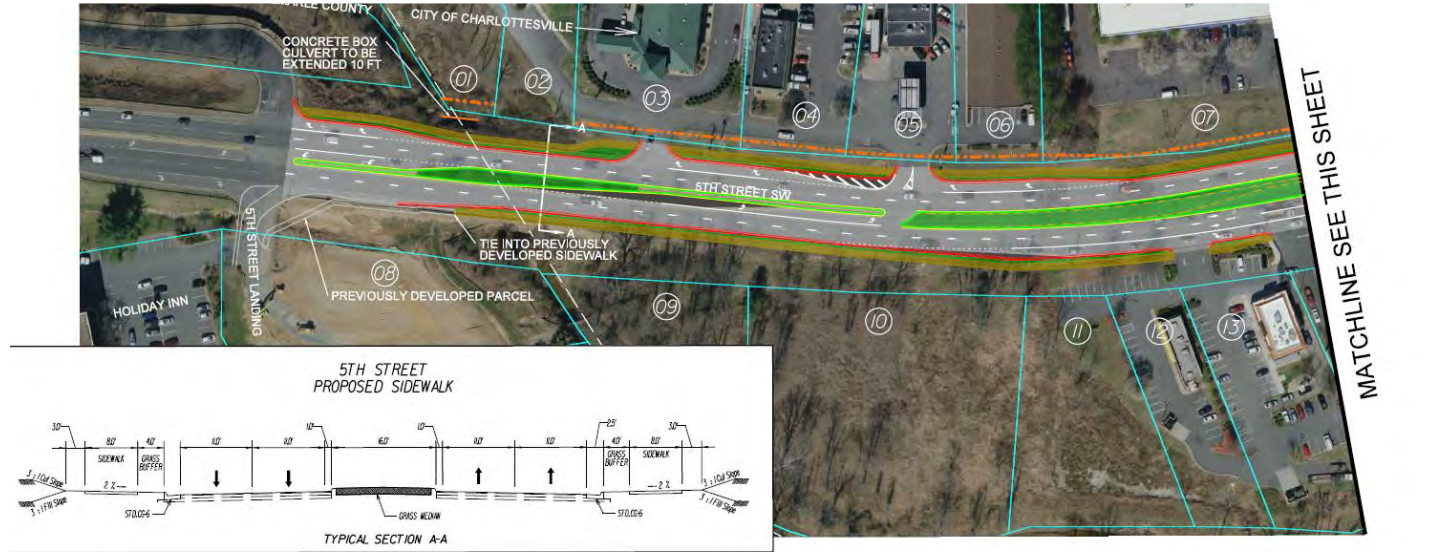
Status: 2nd Review

Avon Street Multi-Modal Improvements – Albe/C'ville



Status: Design Revision

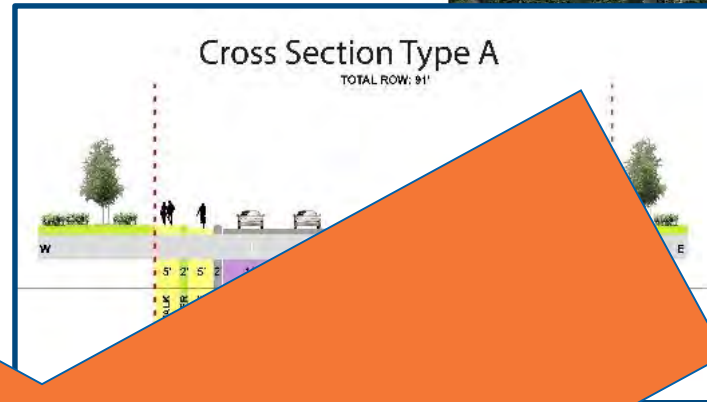
5th Street Multi-Modal Improvements- Harris Rd to Holiday Inn



Status: 2nd Review

5th Street Multi-Modal Imp. (Harris to Cherry) – Charlottesville

Northern
Section



Southern
Section



Status: Cancelled?