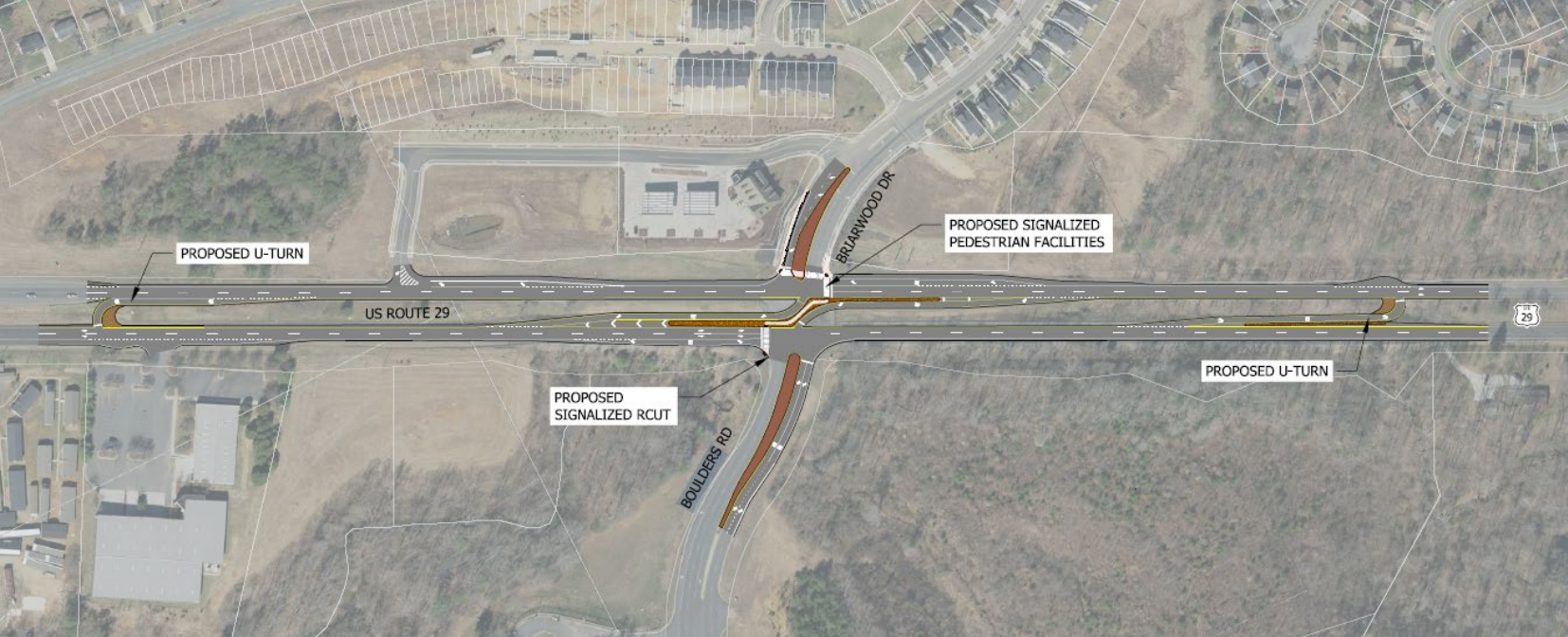
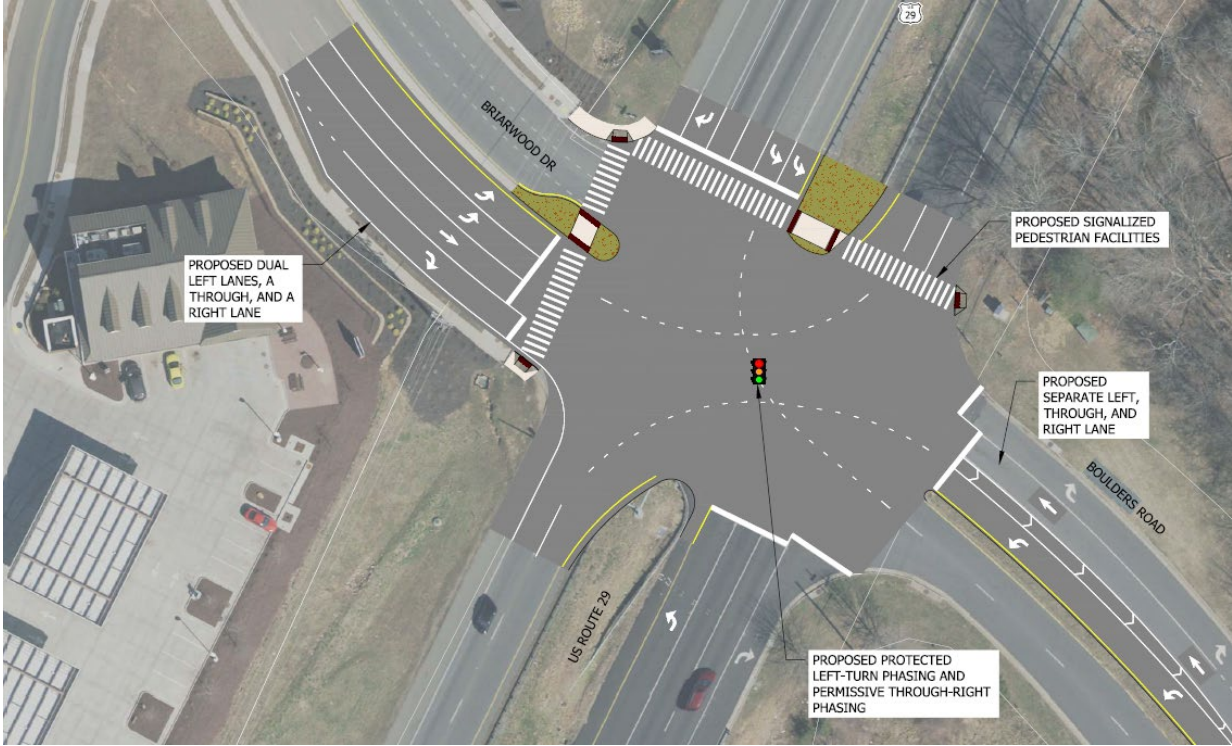


North 29/ Boulders Road/ Briarwood Intersection

	Improve Safety	Manage Congestion	Increase Multimodal Usability and Accessibility	Support Future Growth	Support Economic Development	Order of Magnitude of Costs
No-Build	☆☆☆	☆☆☆	☆☆☆	☆☆☆	☆☆☆	N/A
Modified Signal	☆☆☆	☆☆☆	☆☆☆	☆☆☆	☆☆☆	\$1,200,958
RCUT	☆☆☆	☆☆☆	☆☆☆	☆☆☆	☆☆☆	\$6,400,563



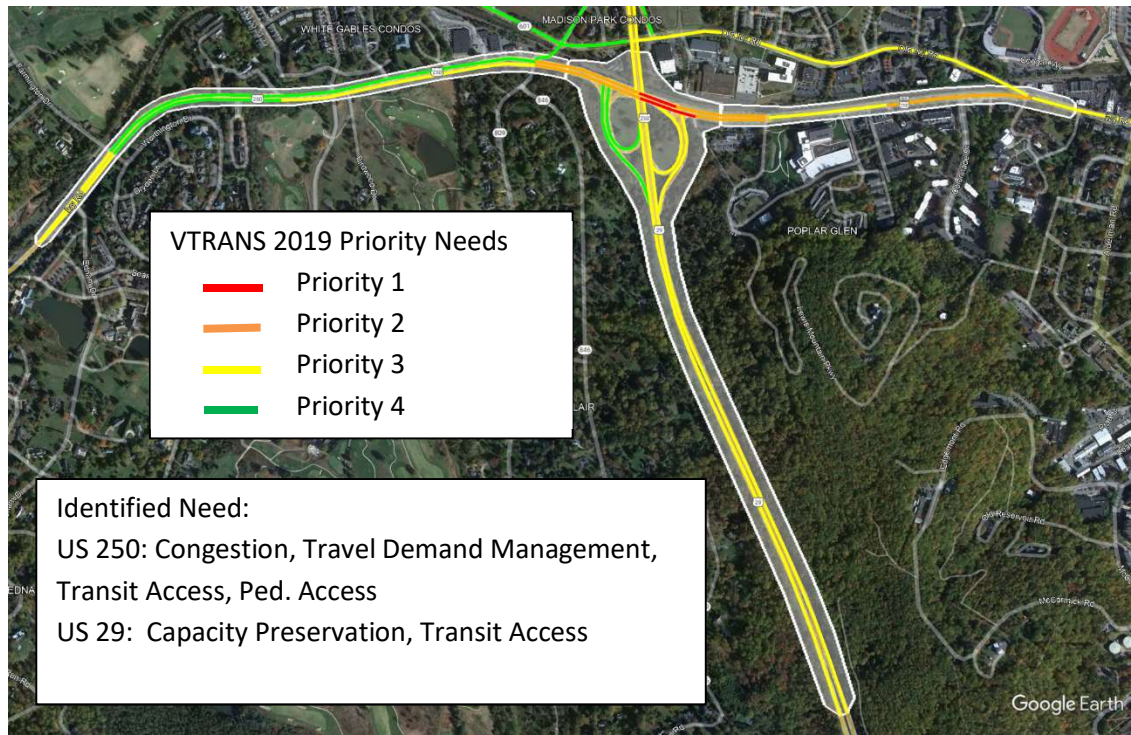
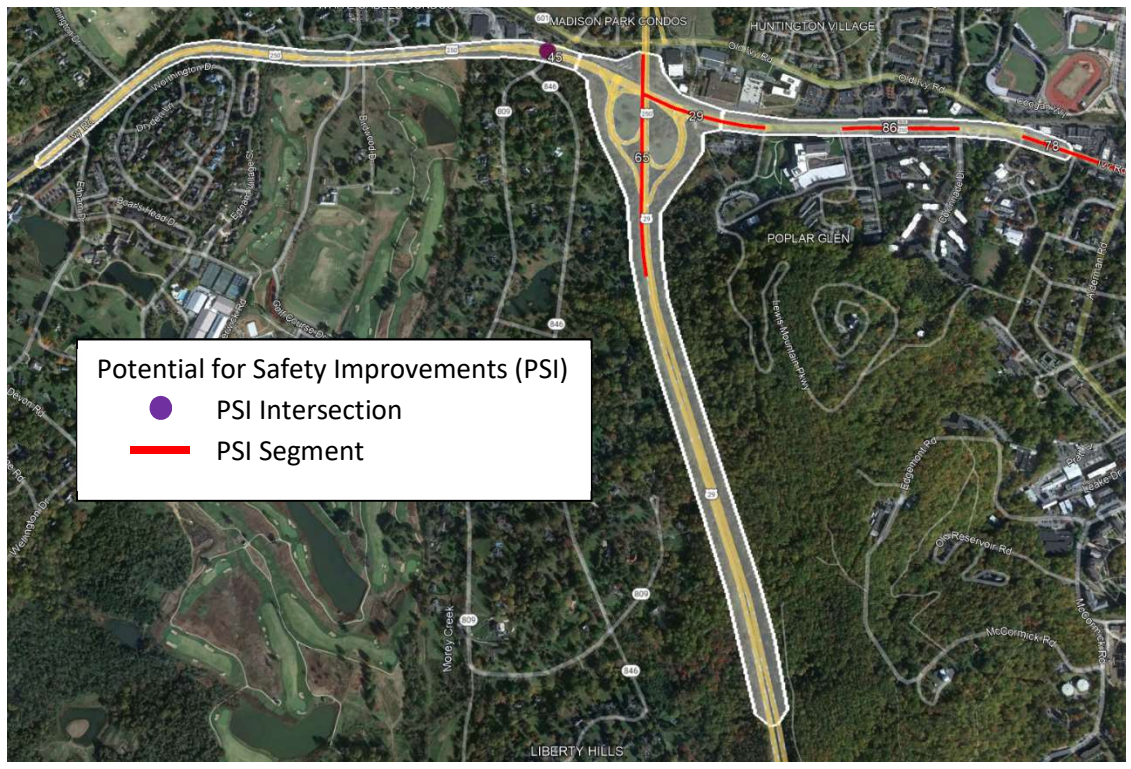
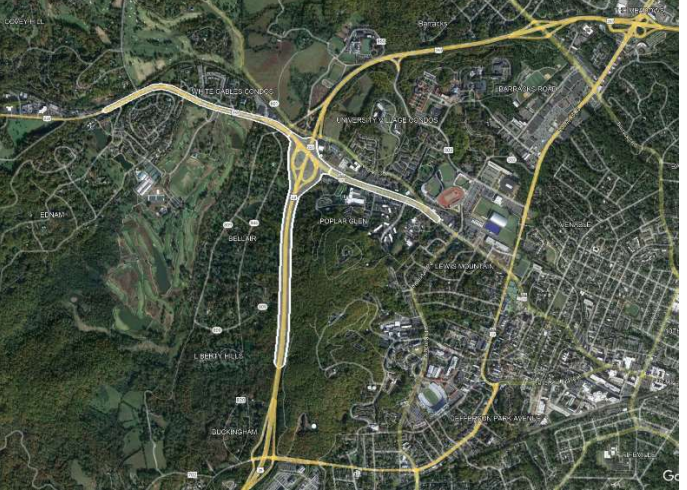
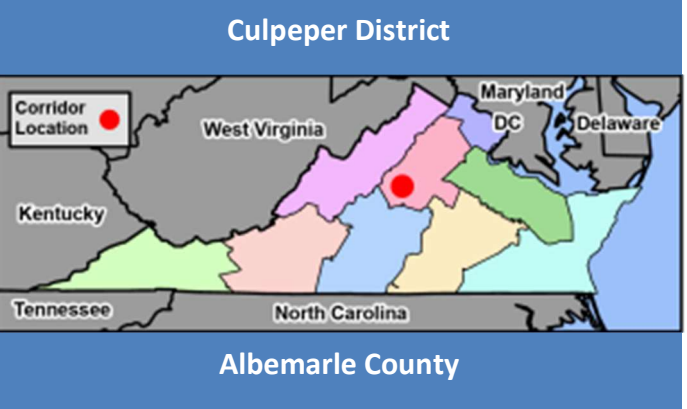
VDOT Culpeper District

Albemarle County

US 29-US 250 Ivy Road Interchange

Corridor Length: 1.2/1.86 miles (29/250)
Vtrans Need: Yes – Priority 2 & 3
COSS Corridor: Yes (both)
Urban/Rural: Urbanized
SYIP: No
SMART SCALE Funded: No
PSAP Corridor: No & Yes
Approx. # of 2017-2021 Crashes: 153
Approx. # of 2017-2021 FI* Crashes: 55
 (One of the injury crashes involved a pedestrian)

*Fatal and Injury



VDOT Culpeper District

Albemarle County

SC 654 Barracks Rd from Georgetown Rd. to Emmett St.

Corridor Length: 0.8 miles
Vtrans Need: Yes – Priority 2
COSS Corridor: Yes
Urban/Rural: Urbanized
SYIP: No
SMART SCALE Funded: No
PSAP Corridor: No
Approx. # of 2017-2021 Crashes: 100
Approx. # of 2017-2021 FI* Crashes: 32 (includes 1 Fatality)
*Fatal and Injury

