


Public Meeting
June 20, 2023

 Charlottesville/Albemarle MPO



MOVING TOWARD
2050

LONG RANGE TRANSPORTATION PLAN



Agenda

- Welcome
- Moving Toward 2050 Overview
- Goals and Objectives
- How to Engage



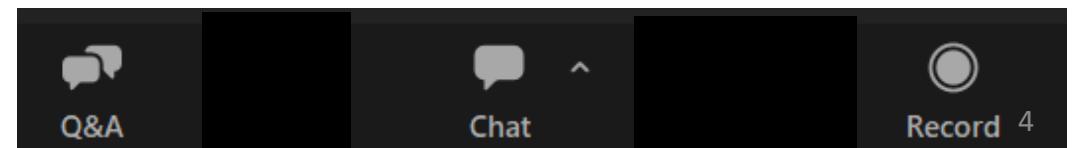
Public Engagement Goals for Current Phase

- Create community awareness and understanding of Moving Toward 2050
- Receive feedback on the community's transportation priorities
- Hear public input on transportation system challenges and needs



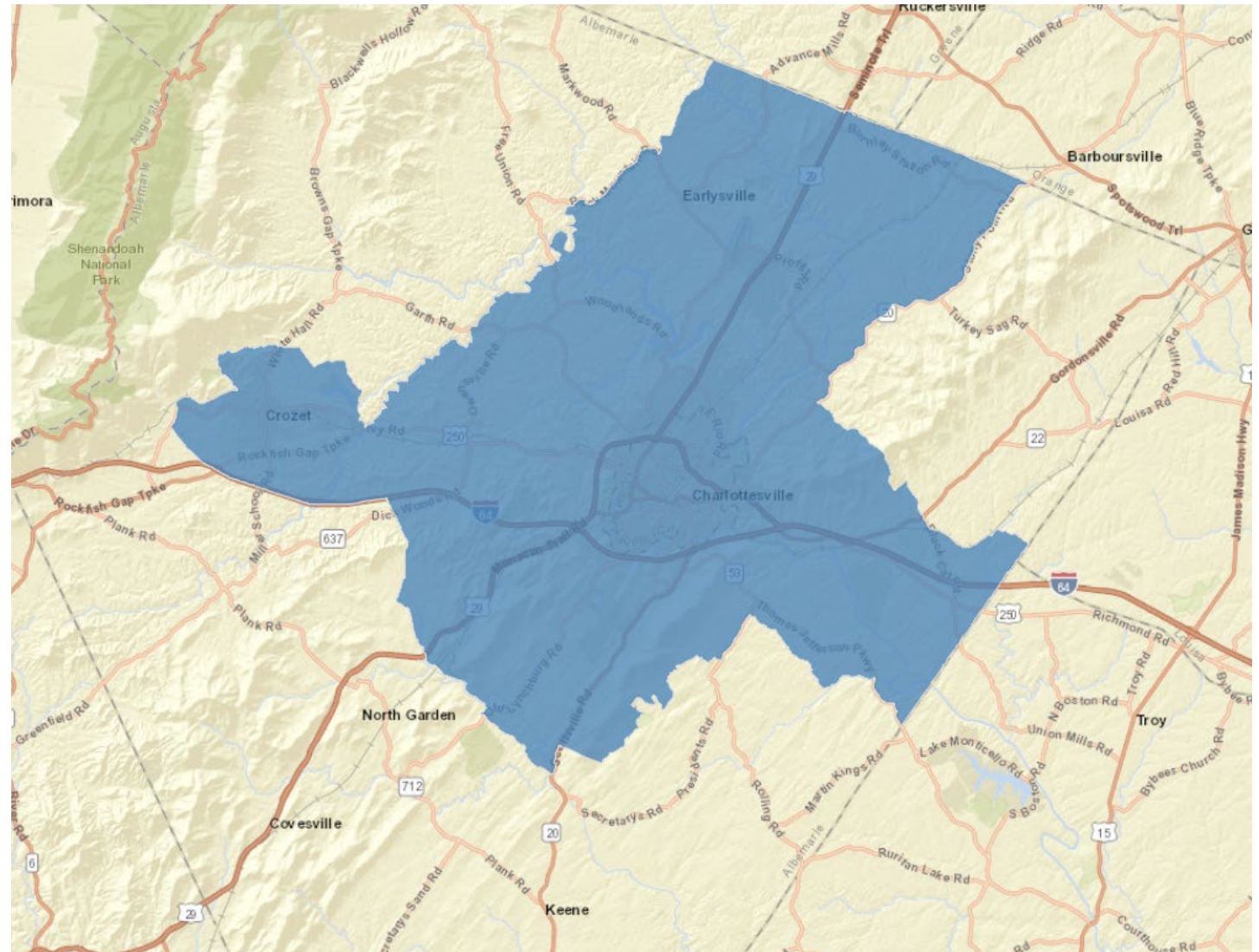
Housekeeping

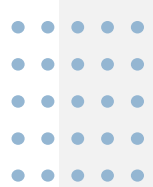
- This is a webinar, so there is no option to speak
- Use the Q&A function at the bottom of the screen to type a question
- Use the chat function to make a comment
- This meeting will be recorded, including any written questions, responses, and comments
- These slides will be translated into Spanish and placed on our website



What is Moving Toward 2050?

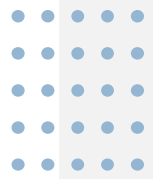
- Federally-mandated Long Range Transportation Plan
 - Uses a planning horizon of at least 25 years
 - Updated every five years
- Developed by the Charlottesville-Albemarle MPO
 - Responsible for carrying out continuing, cooperative, and comprehensive transportation planning and programming processes
 - Includes the City of Charlottesville and urbanized portions of Albemarle County





What does the plan do?

- Considers systemwide needs across all modes of transportation
 - Bike
 - Pedestrians
 - Transit
 - Roadways
- Establishes priorities for investments into the transportation system
- Answers questions such as:
 - Does the existing transportation system get you where you need and want to go safely and efficiently?
 - Is there a need for better connected sidewalks or bike infrastructure?
 - Where are the biggest safety needs?
 - How can we best improve access to places where people need or want to go?



Why is the plan important?

- The required outcome of the Long Range Transportation Plan is a list of prioritized transportation improvement projects
- Federal funding eligibility
- Limited funding opportunities
- Competitive funding programs
- Establish planning pipeline

Examples of Funded Projects from 2045 LRTP

Hydraulic/29 Improvements – Includes pedestrian bridge over 29 and bus pull-offs

US 29/Fontaine Avenue Interchange Improvements

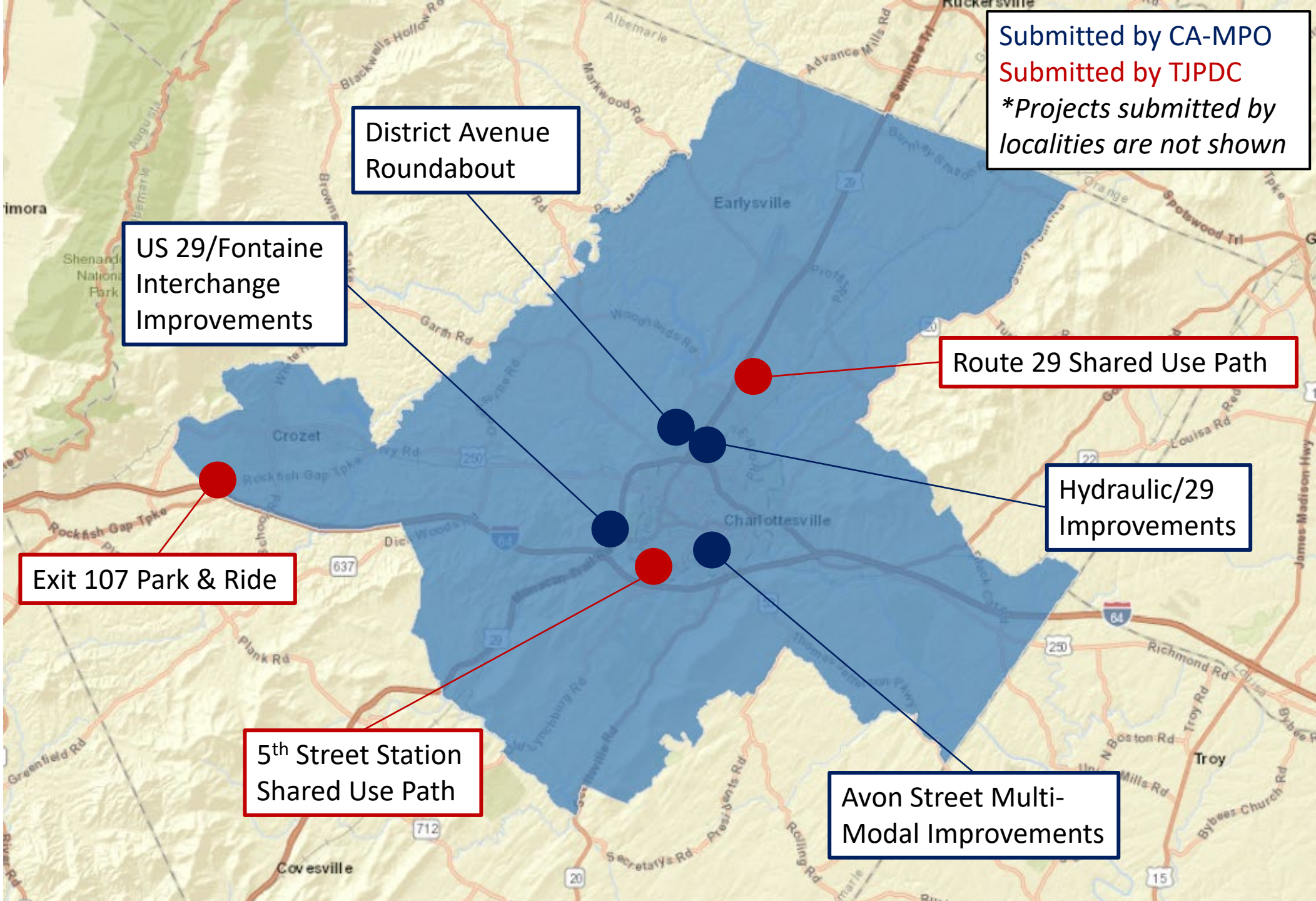
Park & Ride at Exit 107 (Crozet)

Route 29 Shared Use Path from Carrsbrook Drive to Seminole Lane

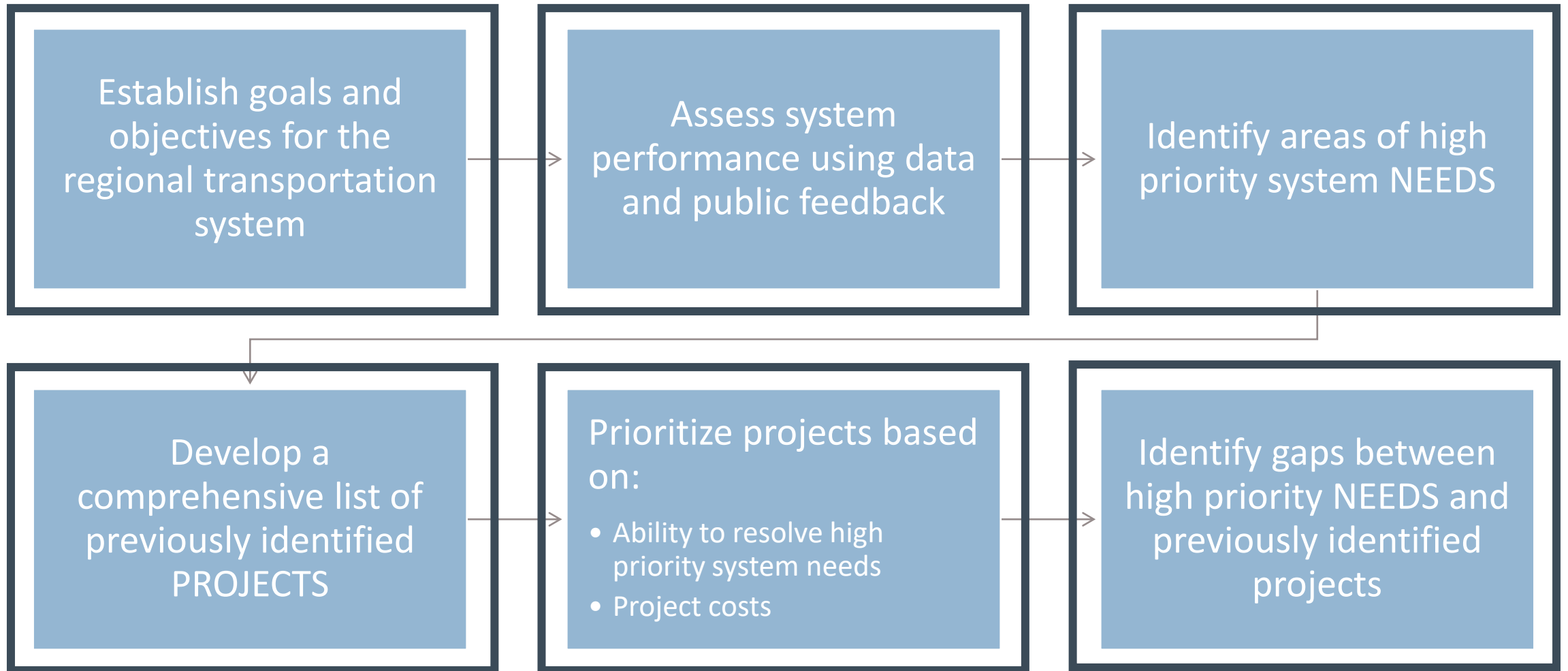
Fifth Street Station Shared Use Path

Roundabout at District Avenue and Hydraulic Road (funding recommended)

Avon Street Multi-Modal Improvements (funding recommended)



What is the process of developing Moving Toward 2050?



How does the public inform the identification of system priorities?

Stakeholder Discussion Groups informed the development of the final Goals and Objectives

Public feedback will inform the weighting of the goals and objectives relative to each other

Public feedback identifying specific locations that need improvement will be collected

Data and public feedback on locations needing improvement will both be used to determine highest priority needs

Moving Toward 2050: Project Timeline



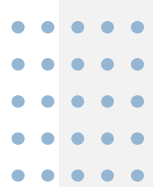
Lenses, Goals, Objectives, and Metrics

- Lenses indicate community values that are interwoven throughout the evaluation process
- Goals and objectives will inform HOW the needs are identified/projects are prioritized
- Goals are general value statements for the transportation system
- Objectives are more specific, measurable statements that support the achievement of the goal
- Metrics are the data that is used to evaluate system needs and projects



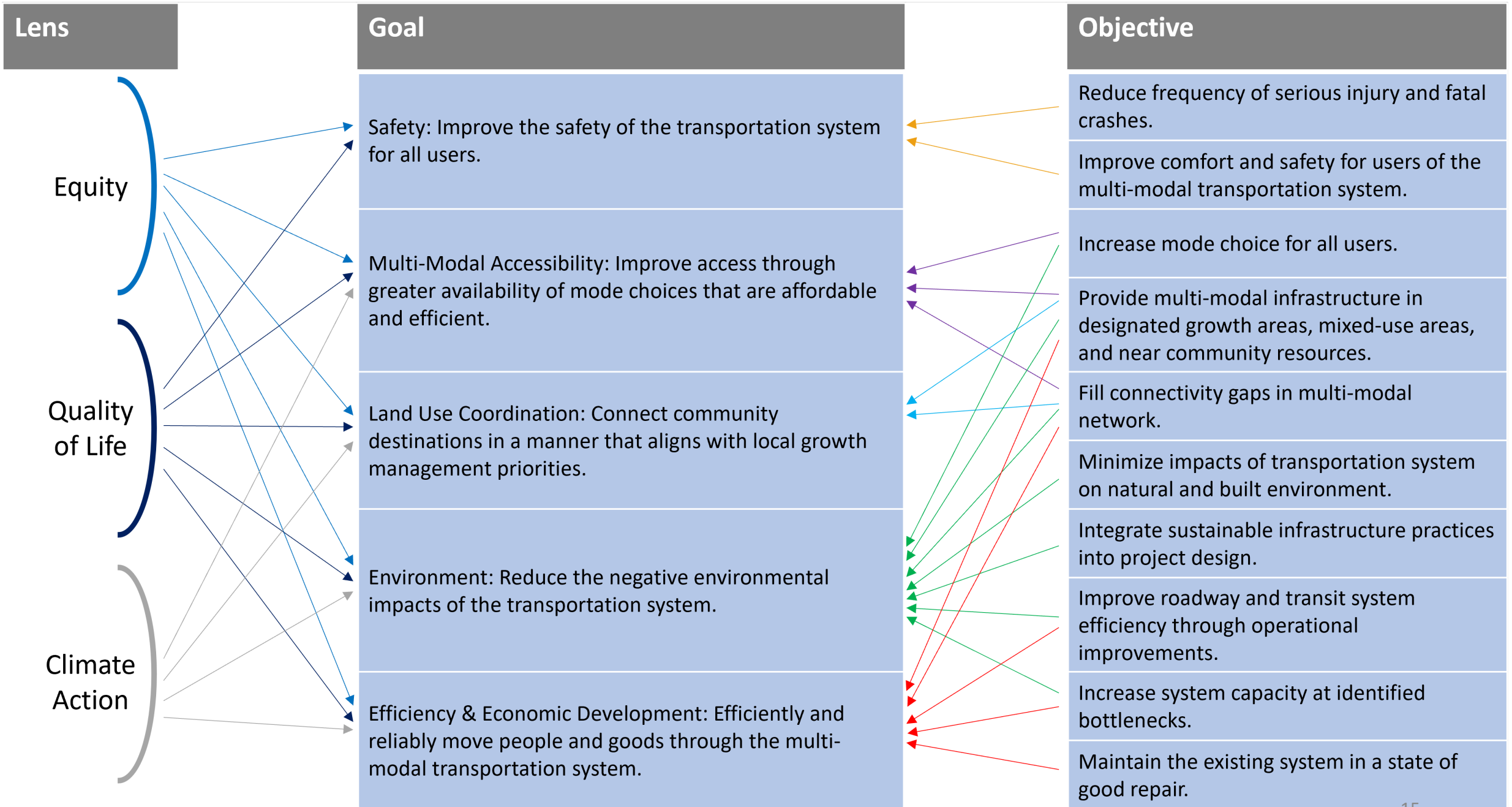
Development of Plan Goals & Objectives

- Previous goals/objectives
- Emerging Priorities
 - Climate Action
 - Equity
- Benchmarked against other regions' plans
- Stakeholder group feedback



Stakeholder Feedback into Goals & Objectives

- Met with three different stakeholder groups:
 - Business
 - Public Safety
 - Community Partners
- 25 individuals participated
- Purpose was to provide broad feedback on draft goals and objectives
- Feedback used to:
 - Adjust goals and objectives
 - Add lens framework



Public Feedback Opportunities

Current Phase:

- MetroQuest Survey
- Open House (6/21/2023)
- Comments
 - Website comment form
 - Comment form at open house
- Public Intercepts
 - Community Advisory Committee Meetings
 - Tabling
 - Outreach to neighborhood associations
 - Others

1 Moving Toward 2050
Long Range Transportation Plan for the Charlottesville-Albemarle Metropolitan Planning Organization

WELCOME

Welcome!
Moving Toward 2050 is the long-range transportation plan developed by the Charlottesville-Albemarle Metropolitan Planning Organization (CA-MPO). This plan will provide guidance to the CA-MPO on projects and initiatives that should be prioritized to improve transportation in our region.

The Charlottesville-Albemarle region is committed to **improving safety**, facilitating **equitable access**, **connecting people** to their community, and **reducing the climate impacts** of the transportation system. Visit our [website](#) to learn more!

[Español](#) [Next](#)

Please take a few minutes to complete the survey to ensure that your preferences are considered as we develop our transportation system priorities.

MOVING TOWARD 2050

The screenshot shows a website interface for the 'Moving Toward 2050' Long Range Transportation Plan. It features a green header with the title and a navigation bar. The main content area has a 'WELCOME' sidebar and a central text box with a 'Next' button. Below the text is a background image of people riding bicycles. At the bottom, there is a survey prompt and a logo for 'MOVING TOWARD 2050' with icons for various transportation modes.



Future Project Phases

- Develop comprehensive list of previously identified projects
 - Previous long range transportation plan
 - Corridor studies
 - Small area plans
 - Transit development plans
 - Locality Comprehensive Plans
- Identify projects that support high priority needs
 - GET MORE PUBLIC FEEDBACK!
- Identify gap needs
 - Planning priorities

Questions?

Project Website: <https://campo.tjpd.org/process-documents/lrtp/2050-lrtp/>
Sandy Shackelford: sshackelford@tjpd.org

THANK YOU!

Project Website: <https://campo.tjpd.org/process-documents/lrtp/2050-lrtp/>
Sandy Shackelford: sshackelford@tjpd.org