



# Monthly Transit Ridership and Service Level Report April, 2018



**Table of Contents**

Table of Contents ..... 3

Glossary ..... 3

Charlottesville Area Transit (CAT) Transit Route abbreviations..... 3

JAUNT Commuter Route (Fixed)..... 3

Charlottesville Area Transit (CAT) System Map ..... 4

Executive Summary..... 5

Charlottesville Area Transit (CAT)..... 6

    Monthly Summary of Total Ridership..... 6

    Total Ridership per Route..... 7

    Passengers per Revenue Hour by Month..... 9

    Passengers per Revenue Mile by Month..... 11

JAUNT ..... 13

    Monthly Summary of Total Ridership by Passenger Origin..... 13

        by Commuter Routes ..... 14

        by Type of Passenger..... 15

        by Public Riders ..... 16

        by Financial Responsibility..... 16

    Passengers per Revenue Hour by Passenger Origin..... 17

    Passengers per Revenue Hour by Public Riders ..... 17

Rideshare ..... 18

    Active Rideshare Registered Users by Locality..... 18

    Active Guaranteed Ride Home Registered Users by Locality ..... 18

    Average Match Rate..... 18

## Glossary

- **Fixed Route Service (FR):** FR operate along a specific route according to a fixed or preset schedule. Each trip serves the same stops, origins and destinations, continuously, until service ends.
- **Match Rate (Rideshare):** Percentage of completed applications that are able to match with another commuter. This can only be calculated for new registrants each month, and doesn't have a total for all active users.
- **No Service:** This service typically occurs during federally recognized holidays, such as New Year's Day and Independence Day. No routes operate during these days.
- **Previous Year:** These sections refer to data for the same month in the previous year.
- **Revenue Hours (RH):** RHs are the hours of service where a bus is providing service to passengers.
- **Revenue Mile (RM):** RHs are the miles a bus travels on a route while providing service to passengers.
- **Ridership:** Ridership is the number of people using a public transportation service in a given time period.
- **Year-to-Date (YTD):** YTD numbers are the sum of values for a period beginning July 1st of the current fiscal year until the end of a specified month.

## Charlottesville Area Transit (CAT) Transit Route abbreviations

Abbreviation	Route Full Name
<b>Free T</b>	UVA - Downtown
<b>Route 1</b>	East Market & PVCC
<b>Route 2</b>	5th Street Station & Downtown
<b>Route 3</b>	Southwood & Belmont
<b>Route 4</b>	UVA Hospital, Fry's Spring & Downtown
<b>Route 5</b>	Barrack's Road & Walmart

Abbreviation	Route Full Name
<b>Route 6</b>	UVA Hospital & Downtown
<b>Route 7</b>	Fashion Square & Downtown
<b>Route 8</b>	Barracks Road & Downtown
<b>Route 9</b>	Greenbrier & Downtown
<b>Route 10</b>	Pantops & Downtown
<b>Route 11</b>	Fashion Square Mall, Rio Rd, & Downtown
<b>Route 12</b>	Walmart, UVA Hospital, Downtown

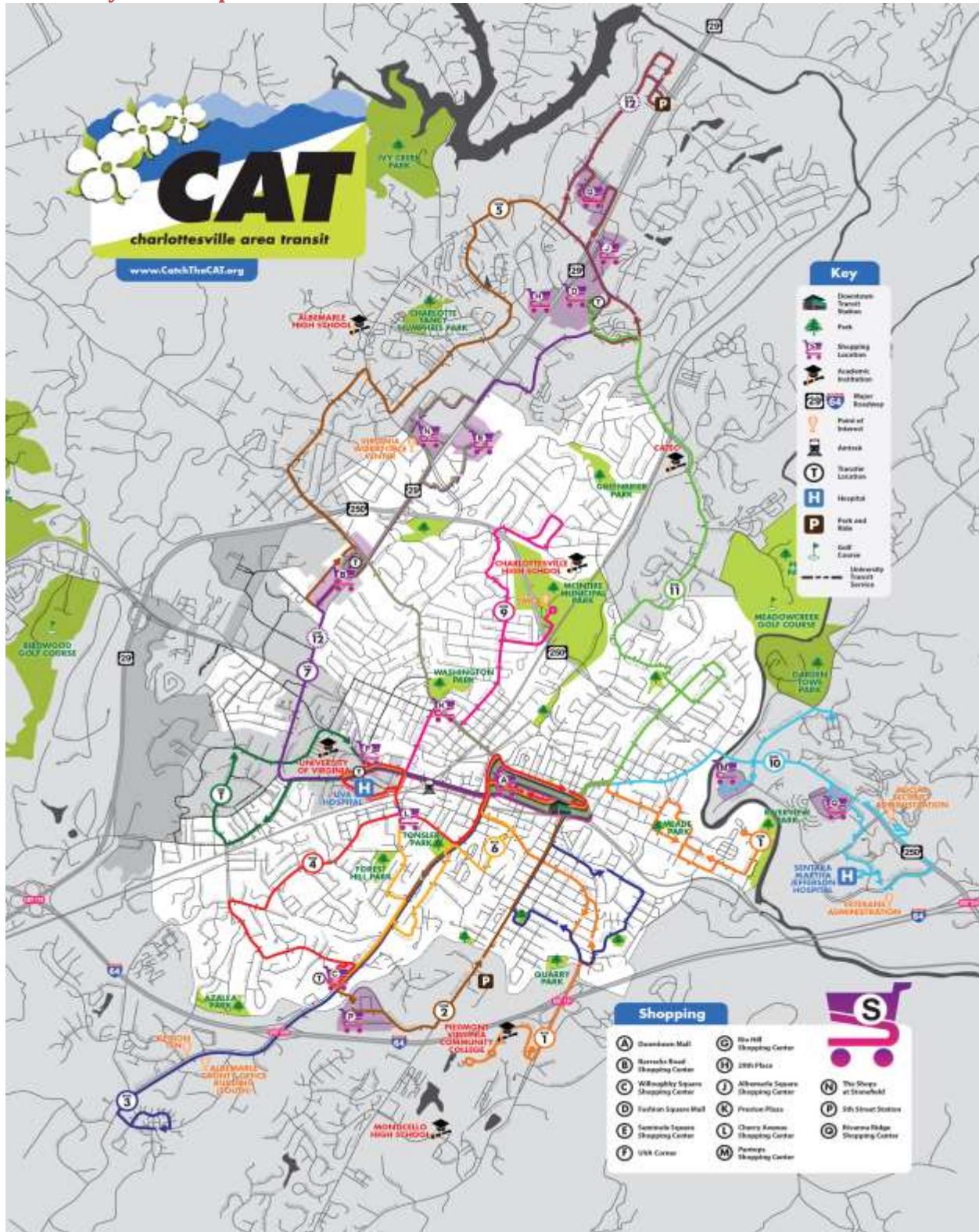
Please click on the route's name to see relevant map and schedule. A CAT Transit System Map is placed on Page.4 of this document as well.

## JAUNT Commuter Route (Fixed)

Routes	Bus Stops
<b>Albemarle County</b>	Crozet, Scottsville, and Earlysville
<b>Buckingham County</b>	Downtown Charlottesville, UVA, Martha Jefferson, Scottsville
<b>Fluvanna County</b>	Stops along Route 15 and Route 29
<b>Nelson County</b>	Lovington Express Route, Roseland Route, Wintergreen Employment Route



# Transit System Map



## Executive Summary

The purpose of this report is to provide monthly updates on existing transit options serving Albemarle, Fluvanna, Greene, Louisa and Nelson Counties, and City of Charlottesville. This document includes transit ridership data provided by Charlottesville Area Transit (CAT), JAUNT, as well as Rideshare, organized by transit routes, passenger origin, type of service, day of week, and other attributes. To illustrate changes taken place in ridership, comparisons are made to the previous month, and the same month of the previous year.

### Transit Trends

#### Charlottesville Area Transit (CAT)

*In February 2018, in comparison with February 2017:*

- Total Ridership decreased in February 2018 by 6.7%
- Total Revenue Hours increased by 15.3%
- Total Revenue Miles decreased by 11.7%
- Passengers per Revenue Hour and per Revenue Mile decreased by 19.2% and 16.52% respectively
- Routes 2,3,6 had increased ridership
- Routes 1,4,5,7,8,9,10,11,12 and Free Trolley had decreased ridership
- Routes funded by Albemarle County (Route 1,2,3,5,10,11) had an overall ridership decrease of 1%
- University Rides increased by almost 5%
- In Fiscal Year 2018 (as of February), ridership in all months had decreased in comparison with same months in Fiscal Year 2017, resulting in an overall decrease of 7.7% in total ridership so far,

#### JAUNT

*In February 2018, in comparison with February 2017:*

- Total Ridership increased in all jurisdictions but Louisa County and Nelson County, resulting in a 5% increase in total ridership.
- Commuter Routes had an overall increase of 31% in total ridership. All commuter routes except the Nelson County route had ridership increases. The highest increase was in Albemarle County route, by 43%, followed by Buckingham County, by 33%.
- Ridership in all passenger types increased by more than 4%.
- Ridership of the disabled increased by more than 29%.



## Charlottesville Area Transit (CAT)

### Monthly Summary of Total Ridership

Summary All Routes							
	February, 2017	January, 2018	February, 2018	Change by Month	Current YTD Total	Previous YTD Total	YTD Change
<b>Total Passengers</b>	183,948	159,002	171,550	-6.74%	1,370,702	1,485,649	-7.74%
<b>Total Revenue Hours</b>	7,053	8,826	8,136	15.36%	68,879	65,318	5.45%
<b>Total Revenue Miles</b>	67,435	81,504	75,336	11.72%	634,386	637,437	-0.48%
<b>Passengers/RH</b>	26.08	18.02	21.09	-19.15%	19.90	22.74	-12.51%
<b>Passengers/RM</b>	2.73	1.95	2.28	-16.52%	2.16	2.33	-7.29%



Total Ridership per Route

Total Ridership per Route All Routes								
Route	February, 2018	% of Ridership	February, 2017	Change by Month	Current YTD Total	% of YTD Ridership	Previous YTD Total	YTD Change
<b>Free T</b>	62,312	36.32%	67,536	-7.74%	433,881	31.65%	513,689	-15.54%
<b>Route 1</b>	3,198	1.86%	3,901	-18.02%	27,741	2.02%	32,434	-14.47%
<b>Route 2*</b>	4,289	2.50%	3,108	38.00%	36,802	2.68%	12,952	184.14%
<b>Route 3</b>	8,370	4.88%	8,081	3.58%	71,791	5.24%	73,061	-1.74%
<b>Route 4</b>	8,025	4.68%	9,129	-12.09%	71,241	5.20%	78,032	-8.70%
<b>Route 5</b>	16,857	9.83%	17,125	-1.56%	144,889	10.57%	146,455	-1.07%
<b>Route 6</b>	6,498	3.79%	6,299	3.16%	52,172	3.81%	51,095	2.11%
<b>Route 7</b>	42,605	24.84%	46,255	-7.89%	355,603	25.94%	398,849	-10.84%
<b>Route 8</b>	7,188	4.19%	7,576	-5.12%	61,947	4.52%	66,316	-6.59%
<b>Route 9</b>	1,300	0.76%	2,613	-50.25%	14,507	1.06%	19,323	-24.92%
<b>Route 10</b>	4,501	2.62%	5,309	-15.22%	39,955	2.91%	44,483	-10.18%
<b>Route 11</b>	4,979	2.90%	5,123	-2.81%	45,438	3.31%	40,006	13.58%
<b>Route 12</b>	1,428	0.83%	1,893	-24.56%	14,735	1.07%	8,954	64.56%
<b>Total</b>	<b>171,550</b>	-	<b>183,948</b>	<b>-6.74%</b>	<b>1,370,702</b>	-	<b>1,485,649</b>	<b>-7.74%</b>

\*Route 2 did not begin operation until October 2016



Total Ridership per Albemarle Funded Routes

Total Ridership per Route Albemarle Funded Routes & University Rides				
Route	February, 2018	% of Ridership	February, 2017	Change 2017-2018
Route 1	3,198	7.58%	3,901	-18.02%
Route 2*	4,289	10.16%	3,108	38.00%
Route 3	8,370	19.84%	8,081	3.58%
Route 5	16,857	39.95%	17,125	-1.56%
Route 10	4,501	10.67%	5,309	-15.22%
Route 11	4,979	11.80%	5,123	-2.81%
<b>Albemarle Funded Routes Total**</b>	<b>42,194</b>	<b>24.5%</b>	<b>42,647</b>	<b>-1.06%</b>
<b>University Rides***</b>	<b>48,822</b>	<b>28.4%</b>	<b>46,512</b>	<b>4.97%</b>
<b>All Service</b>	<b>171,550</b>	<b>-</b>	<b>183,948</b>	<b>-6.7%</b>

\*Route 2 did not begin operation until October 2016

\*\* This sum does not include ridership numbers of Route 2

\*\*\*University Rides refer to the ride provided on a CAT route (including the Free Trolley) where the passenger has presented and scanned to the fare box a valid University of Virginia student, staff or health services identification badge in lieu of payment of fare. All University rides are provided fare free by CAT.

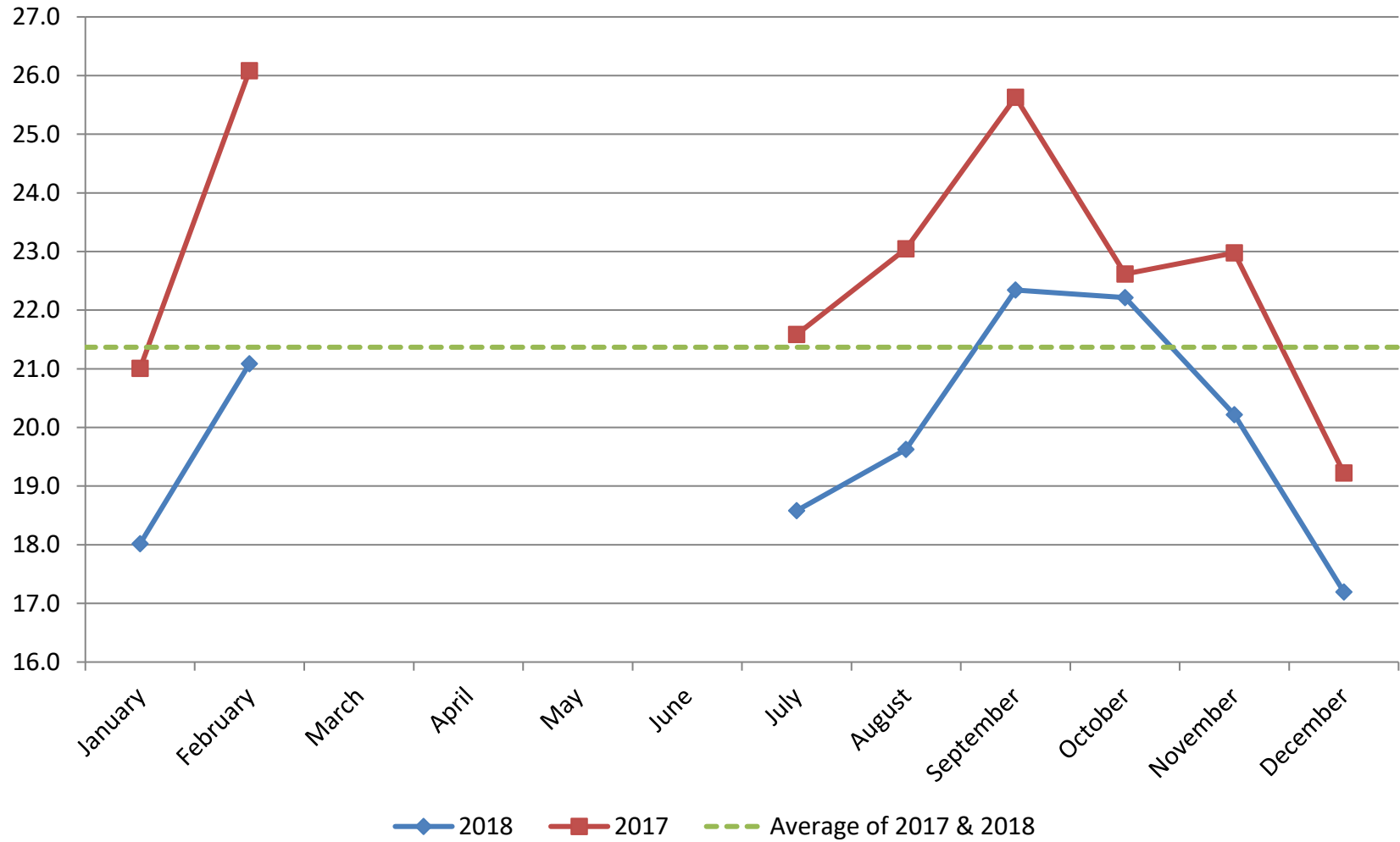




Passengers per Revenue Hour by Month

Passengers per Revenue Hour by Month All Routes							
Month	FY-2018			FY-2017			Change Pass/RH
	Passengers	Revenue Hours	Pass/RH	Passengers	Revenue Hours	Pass/RH	
January	159,002	8,826	18.02	165,307	7,869	21.01	-14.24%
February	171,550	8,136	21.09	183,948	7,053	26.08	-19.15%
March							
April							
May							
June							
July	157,890	8,498	18.58	171,242	7,934	21.58	-13.92%
August	178,475	9,094	19.63	196,711	8,536	23.04	-14.84%
September	191,855	8,587	22.34	215,615	8,413	25.63	-12.82%
October	189,411	8,527	22.21	209,130	9,247	22.62	-1.78%
November	177,708	8,790	20.22	189,846	8,263	22.98	-12.01%
December	144,811	8,421	17.20	153,850	8,003	19.22	-10.55%
<b>Total</b>	<b>1,370,702</b>	<b>68,879</b>	<b>19.90</b>	<b>1,485,649</b>	<b>65,318</b>	<b>22.74</b>	<b>-12.51%</b>

### Passengers per Revenue Hour by Month (Calendar Year)

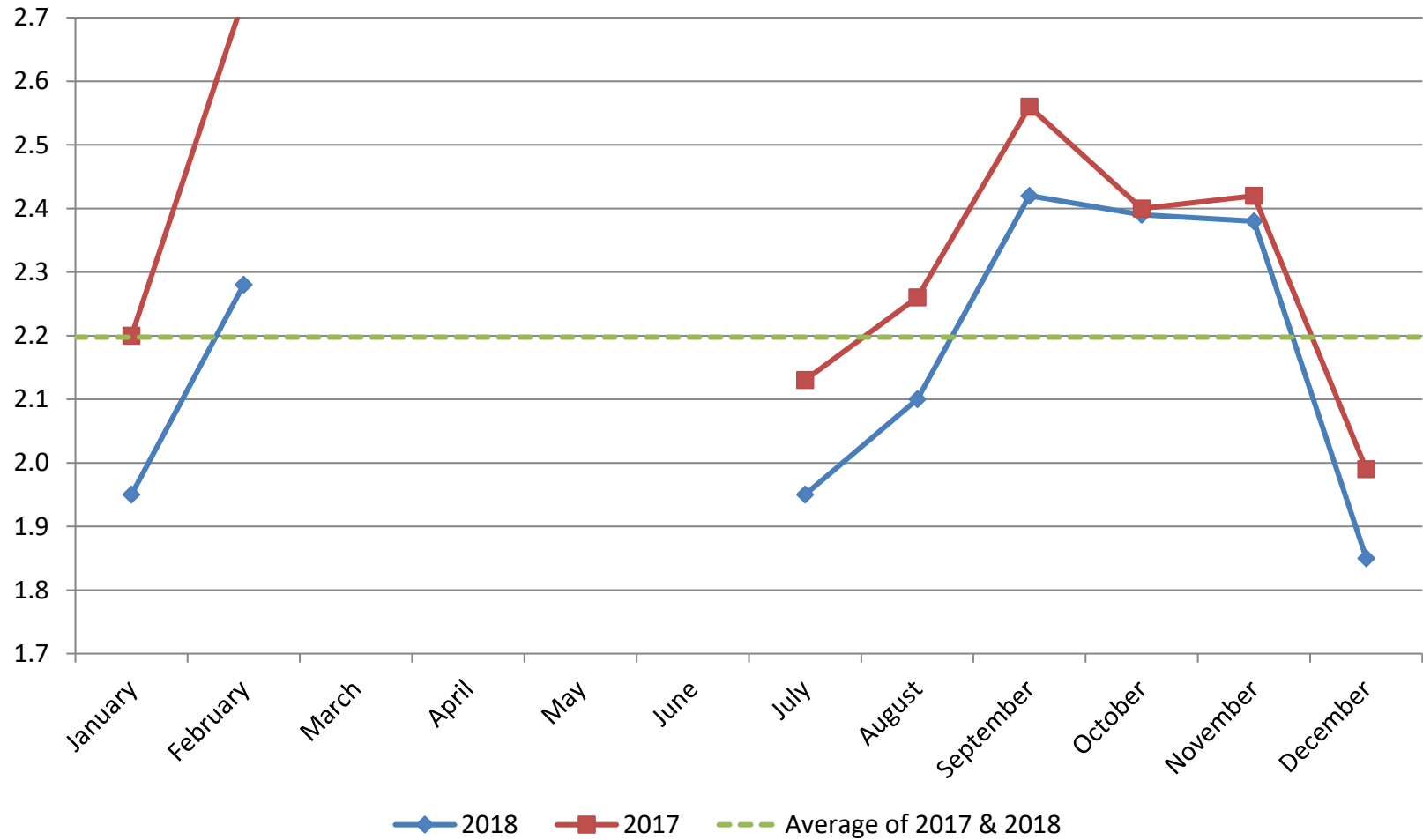




Passengers per Revenue Mile by Month

Passengers per Revenue Mile by Month All Routes							
Month	FY-2018			FY-2017			Change Pass/RM
	Passengers	Revenue Miles	Pass/RM	Passengers	Revenue Miles	Pass/RM	
January	159,002	81,504	1.95	165,307	75,094	2.20	-11.38%
February	171,550	75,336	2.28	183,948	67,435	2.73	-16.52%
March							
April							
May							
June							
July	157,890	81,050	1.95	171,245	80,569	2.13	-8.35%
August	178,475	85,075	2.10	196,711	87,127	2.26	-7.08%
September	191,855	79,314	2.42	215,615	84,354	2.56	-5.37%
October	189,411	79,166	2.39	209,130	87,215	2.40	-0.22%
November	177,708	74,802	2.38	189,846	78,424	2.42	-1.86%
December	144,811	78,139	1.85	153,850	77,219	1.99	-6.98%
<b>Total</b>	<b>1,370,702</b>	<b>634,386</b>	<b>2.16</b>	<b>1,485,652</b>	<b>637,437</b>	<b>2.33</b>	<b>-7.29%</b>

### Passengers per Revenue Mile by Month (Calendar Year)



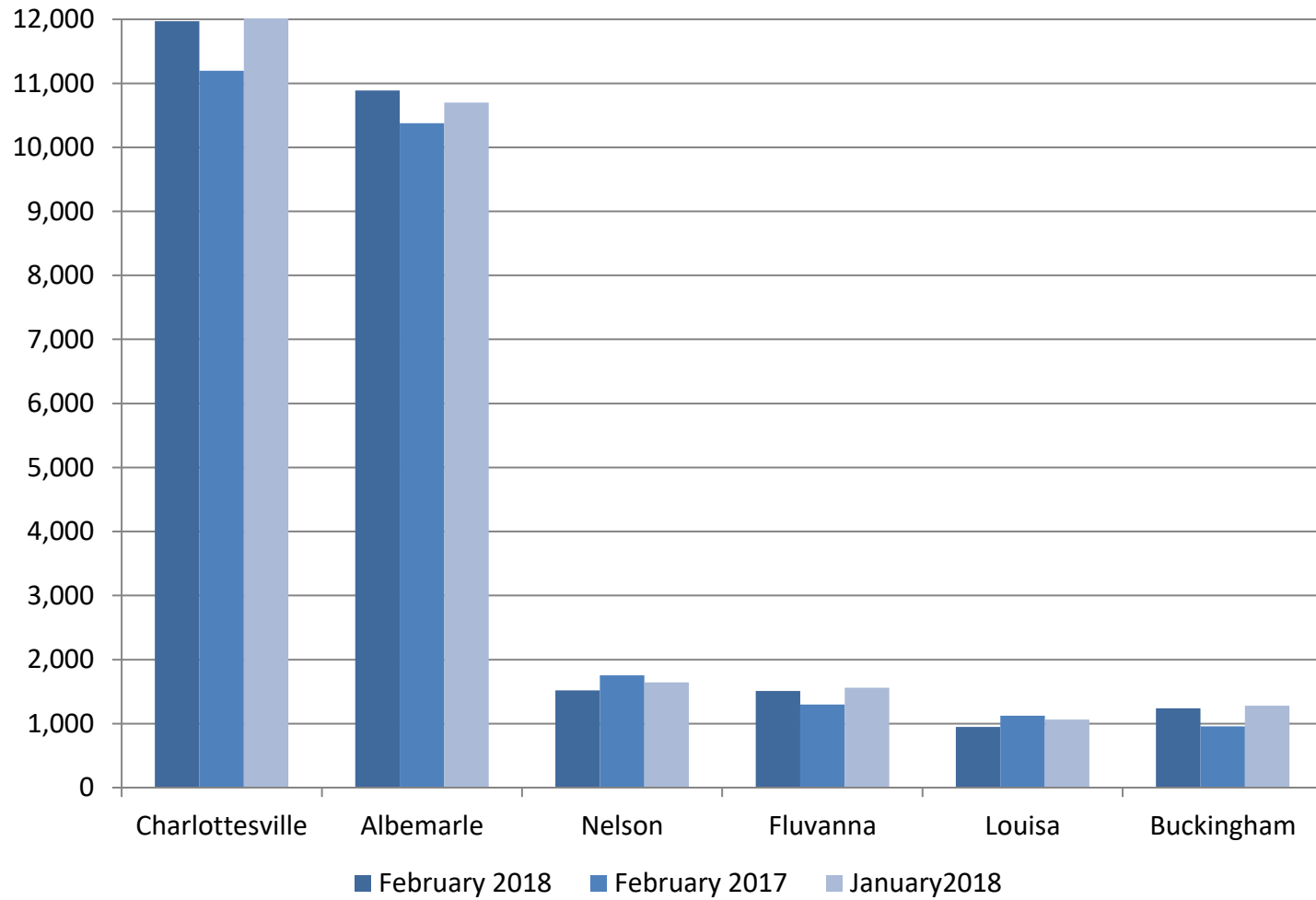




Monthly Summary of Total Ridership by Passenger Origin

Total Number of Passengers by Origin							
Passenger Origin	February, 2017	January, 2018	February, 2018	% Change FY17 to FY18	YTD FY17	YTD FY18	% Change FY17 to FY18
<b>Charlottesville</b>	11,197	12,847	11,970	6.9%	87,170	86,322	-1.0%
<b>Albemarle</b>	10,375	10,701	10,886	4.9%	85,573	87,395	2.1%
<b>Nelson</b>	1,752	1,642	1,518	-13.4%	13,535	13,336	-1.5%
<b>Fluvanna</b>	1,296	1,559	1,512	16.7%	11,273	12,115	7.5%
<b>Louisa</b>	1,125	1,064	948	-15.7%	8,874	7,391	-16.7%
<b>Buckingham</b>	959	1,280	1,240	29.3%	7,521	9,968	32.5%
<b>Total</b>	<b>26,704</b>	<b>29093</b>	<b>28,074</b>	<b>5.1%</b>	<b>213946</b>	<b>216527</b>	<b>1.2%</b>

### Total Ridership by Passenger Origin





by Commuter Routes

Total Number of Passengers by Commuter Routes							
Commuter Routes	February, 2017	January, 2018	February, 2018	% Change FY17 to FY18	YTD FY17	YTD FY18	% Change FY17 to FY18
Albemarle	1,302	1,966	1,861	42.9%	10,402	14,840	42.7%
Nelson	398	424	365	-8.3%	3,398	3,490	2.7%
Fluvanna	159	221	197	23.9%	1,204	1,526	26.7%
Buckingham	935	1,280	1,240	32.6%	7,521	9,968	32.5%
<b>Total</b>	<b>2,794</b>	<b>3,891</b>	<b>3,663</b>	<b>31.1%</b>	<b>22,525</b>	<b>29,824</b>	<b>32.4%</b>



by Type of Passenger

Total Number of Passengers by Type							
Type of Passenger	February, 2017	January, 2018	February, 2018	% Change FY17 to FY18	YTD FY17	YTD FY18	% Change FY17 to FY18
Youth	3,061	3,283	3,193	4.3%	24,295	24,711	1.7%
Adult	17,077	18,316	17,817	4.3%	135,544	137,863	1.7%
Elderly	7,109	7,625	7,417	4.3%	56,426	57,391	1.7%
Disabled (All Passengers)	18,090	24,035	23,380	29.2%	157,713	180,909	14.7%
<b>Total</b>	<b>27,247</b>	<b>29,224</b>	<b>28,427</b>	<b>4.3%</b>	<b>216,265</b>	<b>219,965</b>	<b>1.7%</b>



by Public Riders

Total Number of Passengers by Passenger Origin (Public Riders)							
Passenger Origin	February, 2017	January, 2018	February, 2018	% Change FY17 to FY18	YTD FY17	YTD FY18	% Change FY17 to FY18
Charlottesville	168	251	258	53.6%	1,529	1,653	8.1%
Albemarle	3,158	3,246	3,396	7.5%	24,511	25,610	4.5%
Nelson	1,359	1,222	1,144	-15.8%	10,087	10,166	0.8%
Fluvanna	1,070	1,370	1,313	22.7%	8,779	10,453	19.1%
Louisa	783	780	678	-13.4%	5,662	4,989	-11.9%
Buckingham	959	1,280	1,240	29.3%	7,521	9,968	32.5%
<b>Total</b>	<b>18,900</b>	<b>20,182</b>	<b>19,859</b>	<b>5.1%</b>	<b>152,848</b>	<b>160,869</b>	<b>5.2%</b>



by Financial Responsibility

Total Number of Passengers by Financial Responsibility							
Passenger Origin	February, 2017	January, 2018	February, 2018	% Change FY17 to FY18	YTD FY17	YTD FY18	% Change FY17 to FY18
Public	18,900	20,182	19,859	5.1%	152,848	160,869	5.2%
Agency	8,347	9,042	8,568	2.6%	63,417	59,096	-6.8%
<b>Total</b>	<b>27,247</b>	<b>29,224</b>	<b>28,427</b>	<b>4.3%</b>	<b>216,265</b>	<b>219,965</b>	<b>1.7%</b>





Passengers per Revenue Hour by Passenger Origin

Passengers per Revenue Hour by Passenger Origin							
Passenger Origin	February 2018			February 2017			Change Pass/RH
	Passengers	Revenue Hours	Pass/RH	Passengers	Revenue Hours	Pass/RH	
Charlottesville	11,970	2,720	4.4	11,197	3,119	3.59	0.81
Albemarle	10,886	3,715	2.93	10,375	3,871	2.68	0.25
Nelson	1,518	419	3.62	1,752	448	3.91	-0.29
Fluvanna	1,512	756	2	1,296	745	1.74	0.26
Louisa	948	402	2.36	1,125	455	2.47	-0.11
Buckingham	1,240	191	6.48	959	196	4.89	1.59
<b>Total</b>	<b>28,074</b>	<b>8,559</b>	<b>3.28</b>	<b>26,704</b>	<b>8,532</b>	<b>3.13</b>	<b>0.15</b>



Passengers per Revenue Hour by Public Riders

Passengers per Revenue Hours by Public Riders							
Passenger Origin	February 2018			February 2017			Change Pass/RH
	Passengers	Revenue Hours	Pass/RH	Passengers	Revenue Hours	Pass/RH	
Charlottesville	168	82	2.05	258	103	2.51	-0.46
Albemarle	3,158	1,243	2.54	3,396	1,551	2.19	0.35
Nelson	1,359	348	3.90	1,144	338	3.38	0.52
Fluvanna	1,070	598	1.79	1,313	680	1.93	-0.14
Louisa	783	274	2.86	678	308	2.20	0.66
Buckingham	959	196	4.89	1,240	191	6.48	-1.59
<b>Total</b>	<b>18,900</b>	<b>6,823</b>	<b>2.77</b>	<b>19,859</b>	<b>7,912</b>	<b>2.51</b>	<b>0.26</b>

### Active Rideshare Registered Users by Locality

Active Rideshare Registered Users by Locality of Origin				
User Origin	February, 2017	January, 2018	February, 2018	Change 2017-2018
Charlottesville	68	75	76	8
Albemarle	124	134	137	13
Nelson	13	17	17	4
Fluvanna	39	41	41	2
Louisa	24	28	28	4
Buckingham	4	4	4	0
<b>Area Total (#/% of Total)</b>	<b>272/58%</b>	<b>299/58%</b>	<b>303/57%</b>	<b>31/54%</b>
<b>Total*</b>	<b>472</b>	<b>520</b>	<b>529</b>	<b>57</b>

### Active Guaranteed Ride Home Registered Users by Locality

Active Guaranteed Ride Home Registered Users by Locality of Origin				
User Origin	February, 2017	January, 2018	February, 2018	Change 2017-2018
Charlottesville	11	12	12	1
Albemarle	18	19	19	1
Nelson	10	10	10	0
Fluvanna	8	8	8	0
Louisa	10	10	10	0
Buckingham	15	15	15	0
<b>Area Total (#/% of Total)</b>	<b>72/52%</b>	<b>74/54%</b>	<b>74/54%</b>	<b>2/5%</b>
<b>Total</b>	<b>138</b>	<b>181</b>	<b>181</b>	<b>43</b>

### Average Match Rate

Average Match Rate				
	February, 2017	January, 2018	February, 2018	Change 2017-2018
<b>Match Rate</b>	100%	60%	57%	-43%

\*Area total is the sum of the number of users from the jurisdictions listed on the table

\*\*Total is the sum of the number users from all the service areas of Rideshare