

RIVANNA RIVER BIKE/PED CROSSING
STAKEHOLDER ADVISORY
COMMITTEE

February 17th, 2022

STAKEHOLDER ADVISORY COMMITTEE

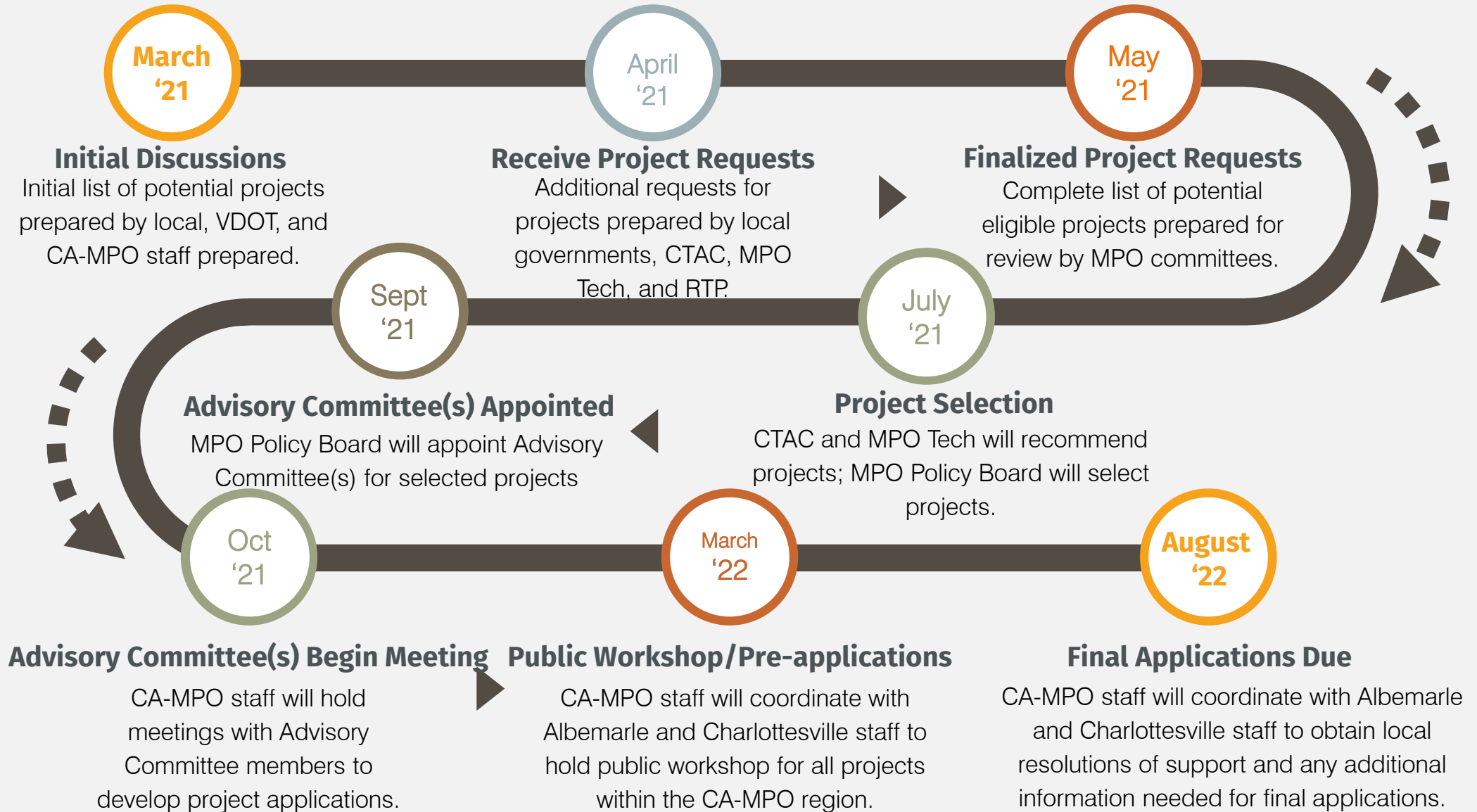
Organization	Name
VDOT	Chuck Proctor
Charlottesville Public Works	Brennen Duncan
Albemarle Planning	Jessica Hersh-Ballering
Charlottesville Parks and Recreation	Chris Gensic
Albemarle Parks and Recreation	Tim Padalino
Pantops Citizen Advisory Committee	Dick Ruffin
Woolen Mills Citizen	Annie Stafford
Rivanna Conservation Alliance	Lisa Wittenborn
Regional Transit Partnership	Bea LaPisto-Kirtley
Charlottesville Planning Commission	Karim Habbab
Albemarle Planning Commission	Daniel Bailey
Rivanna Trails Foundation	Fran Lawrence
Citizens Transportation Advisory Committee (MPO)	Stuart Gardner

Reminder:

There will be an opportunity for public comments at the end of the meeting. If you are not on the committee or are responding to a specific question that has been raised, please use the chat function to share your thoughts or hold your comments until the end.

THANK YOU FOR YOUR INTEREST IN THIS PROJECT!

SMART SCALE Round Five Timeline



SMART SCALE PROJECT SCORING

- Projects are awarded funding based on their overall benefits scores relative to the project cost
- Benefit scores are based on the following measures:
 - **Safety** – how well the project addresses multimodal safety concerns through best practice crash reduction strategies
 - **Congestion mitigation** – how the project addresses the ability of the transportation system to move people and reduce travel delay
 - **Accessibility** – how the project addresses access to jobs and other opportunities, as well as multiple and connected modal choice
 - **Environmental quality** – how well the project addresses the reduction of pollutant emissions and energy consumption, and minimizing the impact on natural and cultural resources
 - **Economic development** – how the project addresses regional and local economic development plans and new development activity
 - **Land use coordination** – how well the project supports population and employment that on average has a reduced impact on the transportation network
- Projects with the highest benefits relative to cost are funded

PROJECT COST

- Chesapeake Street
 - \$11.3 million (base cost estimate)
- E. Market Street
 - \$15.3 million (base cost estimate)

These are preliminary estimates based on planning level feasibility study. Once location and structure type are determined, more accurate cost estimates can be developed.

SMART SCALE applications require additional contingencies and inflation escalations to be included in the project costs. The cost included in the project application will be significantly higher than these figures.

PARK AND NEIGHBORHOOD IMPACTS

Neighborhood

- Parking capacity issues near Riverview Park could cause additional strain to be placed on neighborhood streets
- Concerns about attracting additional vehicular traffic at either location
- Impact of large concrete/metal structure on the area

Park

- Desire for park to remain in a natural state
- Will attract more active recreational use of the park
- Would require removal of vegetation in certain portions of park
- Impact of large concrete/metal structure on the area

VISUAL IMPACTS

- Scenic River designation
- E. Chesapeake Street alignment is located on a more “open” stretch of the river – bridge would visually have a greater impact
- Arched truss (top), cable-stayed (bottom), and standard truss (not shown) bridge designs are options at either location





Views of the river at approximate bridge sites

Top: Riverview Park
Bottom: Wool Factory

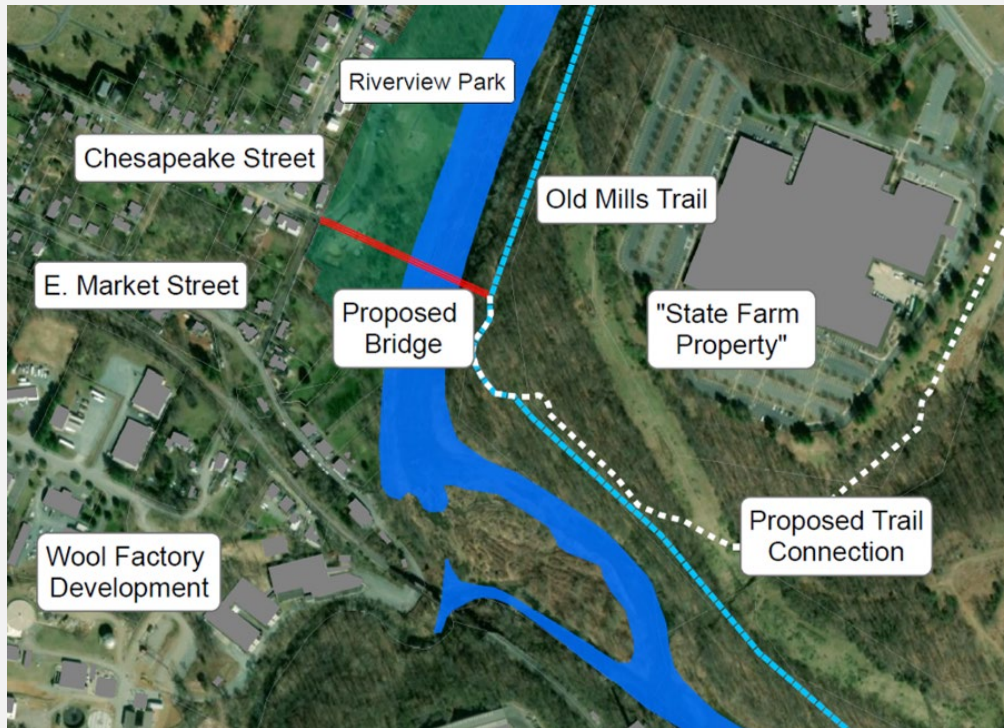
Images courtesy of Piedmont Environmental Council

Riverview Park location – bridge would have greater visibility and would have more of a visual impact on the experience of being on the river (could be a pro or a con depending on perspective)

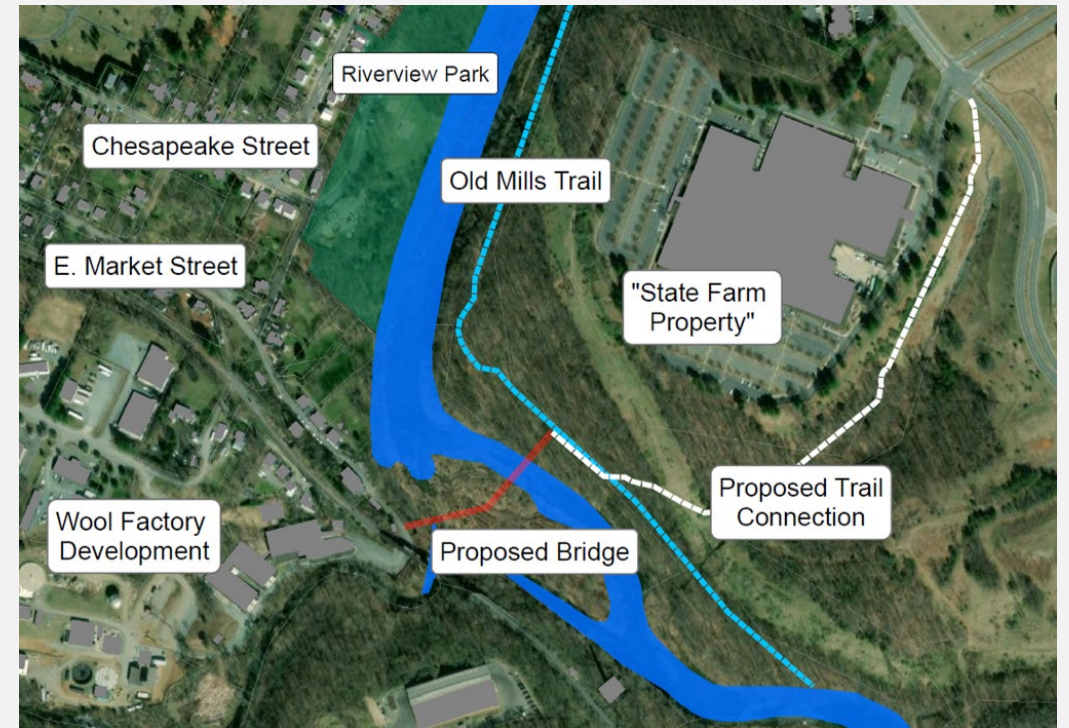
Wool Factory location – bridge would have a lesser visual impact since it is located at a bend in the river. Two spans could also lessen the visual impact.



PREFERENCE POLL (FOR COMMITTEE MEMBERS)



Chesapeake Street Alignment



E. Market Street Alignment

NEXT STEPS

- Public Meeting on February 22, 2022 @ 6 pm
- MetroQuest Survey open until March 4, 2022
- MPO Policy Board Special Meeting on March 10, 2022 @ 1 pm
- MPO Policy Board Regular Meeting on March 23, 2022 @ 4 pm
- Pre-application deadline is March 31, 2022
- Final application deadline is August 31, 2022

PUBLIC COMMENTS/QUESTIONS